

DIARY DATES FOR SEPTEMBER

Details of Church services and events are on p12

- Monday 5th**, Parish Hall, 7.00pm. Parish Council meeting. All welcome.
- Wednesday 7th**, Parish Hall, 7.30pm. WI meeting. Speaker: Fyona Bassett.
- Saturday 10th**, Parish Hall, from 11.00am. WI Jumble Sale.
- Saturday 10th**, Parish Church, 2.00—5.00pm. September Heritage Day.
- Saturday 10th**, Arley Cricket Ground, 11.00am. GB Cricket Club –v– Lord Ashbrook's XI
- Tuesday 13th**, WI Ramblers walk.
- Tuesday 13th**, Parish Hall, 7.30pm. Garden Club Produce Show.
- Thursday 15th**, Cock o' Budworth, 12.30pm. Ladies' lunch.
- Friday 16th**, Garden Club day trip to Harrogate Flower Show.
- Sunday 18th**, Arley Cricket Ground, 1.00pm. GB Cricket Club –v– Antrobus.
- Friday 30th**, Parish Hall, 10.00am —12 noon. Macmillan Coffee Morning.
- Friday 30th**, Parish Hall, 7.00pm. Bram Taylor & the Country Folk.

Your local Legal 500 solicitors

Established for over 23 years, Northwich-based Susan Howarth & Co. Solicitors specialises in Family Law, Child Care, Commercial & Residential Property, and Wills & Probate (incl. Care of the Elderly).

A Lexcel-accredited practice, we're hugely proud to be ranked in Chambers & Partners and recommended as a Leading Firm in the Legal 500 Directory, with Susan also recognised as a Leading Individual.

We offer all new Family Law clients a FREE 30-minute consultation.

Address: 41 Chesterway, Northwich, Cheshire, CW9 5JE

Tel: 01606 48777

Website: www.susanhowarthsolicitors.co.uk

Susan Howarth
& Co. solicitors



Your local printer

SynchroPrint

Synchronising the design, proof and print process.

The Budworth Bulletin is supplied by
SynchroPrint Ltd.

Phone: 01606 42808

BULLETIN TEAM

Jenny Bowman 891431 jenny@fagitta.plus.com

Anna Lee 892352 annalee1@btinternet.com

BUDWORTH BULLETIN

September 2022

Please join us in the Parish Hall on
Friday 30th September
10.00 – 12 noon.

for *coffee, cake, company and chat!



COME FOR
COFFEE
AND
CAKE

WE ARE
MACMILLAN.
CANCER SUPPORT



Organised in aid of Macmillan Cancer Support, registered charity in England and Wales (261017), Scotland (SC039907) and the Isle of Man (504). Also operating in Northern Ireland.

***other drinks are available!**



In July, members of the WI met in the garden of Providence House, by very kind permission of Chris Wise. Providence House was the site of our first meeting in 1932 and so it was apt that Chris welcomed us to look around his beautiful garden as we celebrated our 90th year there. We opened with singing 'Jerusalem' and another review of some of our earlier minutes was enjoyed. Great Budworth's resident herbalist, Kate Huet, gave us a fascinating talk on herbal medicines and how they have been used over the years.

Strawberries, shortbread and scones were served by Tanya, Jo and Mary and we raised a glass to our founder members. It was a very special evening and the weather just about managed to stay fine - but never filled us with confidence!

Twelve members attended a half-day pottery course (see pic, right) and each produced a vase of their own. They look really good!



The bowling competition at our August meeting gave members a chance to have a go and was won by Jane Ford. Rosie Lewis was the runner up, followed by a faith supper (when everyone brings a little contribution). We presented two of our committee members with an arrangement of flowers:

Kay Bashford and Kath Hickson have served on our committee for a long time and certainly earned those lovely blooms.

September is here already and we meet on Wednesday 7th September at 7.30pm when Fyona Bassett, from Bramhall, speaks on the "House of Colour". Everyone is welcome; visitors pay £5. How appropriate that Fyona should be our speaker just three days before our Jumble Sale !!!

The book club are reading 'Still Life' by Sarah Winman and the Ramblers will be off on their jaunts on Tuesday 13th September.

June Wilkinson



A hearty and sincere thank you to the Big Boys for their very generous donation to the Bulletin, following the success of their Street Food party during the Jubilee weekend.

Thanks, too, to Maggie Blower, Jubilee co-ordinator, for the donation to the Bulletin on behalf of the Jubilee Fund, following a successful weekend of celebrations.

(cont'd from previous page)

concerned about the height and industrial type of the fencing.

It has to be hoped that a compromise can be reached which ensures the safety of all the pupils, whilst recognizing the importance of this part of the Conservation Area.

If you would like to find out more, the Application can be viewed on CW&C Planning website - the Application number is: 22/02029/FUL.



Unfortunately the date for making comments to CW&C ended on 10 August. However, any comments can be sent to our Cllr. Norman Wright who is taking an interest in this Application. He can be contacted by phone on 01606 74788/07944 858312 or email :

norman.wright@cheshirewestandchester.gov.uk

The Planning Application will be on the Agenda for discussion at the next Parish Council meeting on 5 September. Do come along and join the conversation.

SMART CARS

Corporate & Airport Specialists

Alan Agnew

01606 44674

07812 199897

smartcars@btconnect.com

We provide a prompt, reliable and courteous service at all times

PADDY PAWS HOME BOARDING DOG DAY CARE

We look after all your dog's needs. Dogs live in the comfort of our home and are taken for walks in the countryside whilst you're away on holiday or at work.



Call Judy/Anna on 01606 891536
07719 576128

Hilltop Farm, Aston-by-Budworth,

FENCING THE SCHOOL FIELD

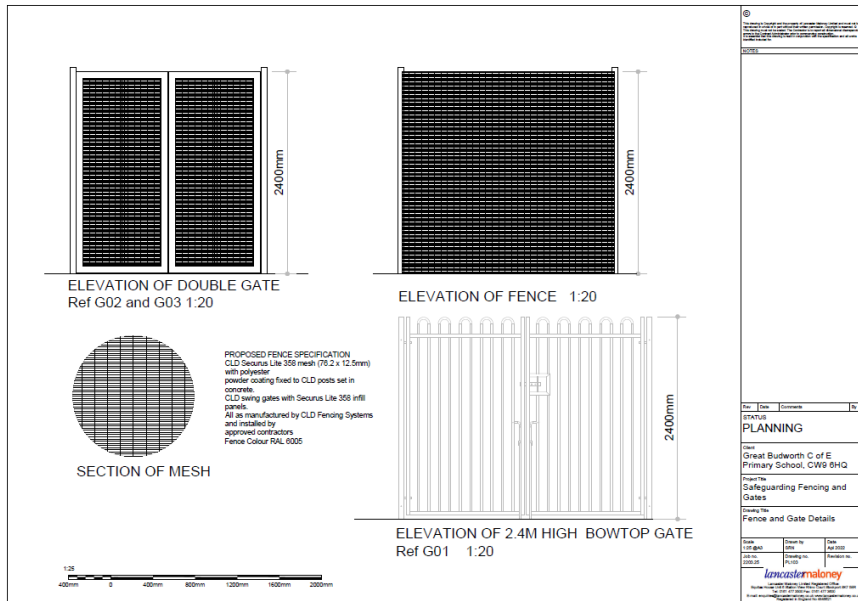
A Planning Application to Cheshire West and Chester (CW&C) has been submitted by Mrs. Wainwright, the newly appointed Head Teacher of Great Budworth CofE Primary School, to enclose the whole school field (pictured opposite) with an 8ft high fence.

The Application was advertised in the Northwich Guardian on 14 July and states that it is required to meet Health & Safety and safeguarding legislation. The illustration in the document shows the type of railing planned. It also includes two locked gates, one at the School end of the Field, and the other on Farthings Lane. The type of fencing has been chosen so that it would be impossible for anyone to climb over.

The fencing (see architect's drawing here) is for the entire perimeter of the Field and would be along the north facing side of the Avenue close to the trees. These trees are all covered by Tree Preservation Orders, were planted about 150 years ago, and are an outstanding part of the Great Budworth Conservation Area. There must be concern about the impact of constructing the fence so close to these trees.

The fencing would then go along Farthings Lane, behind properties on Westage Lane adjacent to the Field, and alongside the rear garden of Providence House. Detailed comments about the Plan have been submitted to CW&C by one resident and can be seen on the Planning website.

Some in the village are expressing their concern that if permission is granted the Field would cease to be a Village facility which it has always been in the past. Others are
(cont'd on next page)



NORTHWICH LIBRARY



Northwich library is to remain closed to the public until late September for stabilisation work and further structural investigations on the building. The alleyway to the side of the library will also close over the same period.

The Council is currently finalising plans to refurbish the library fully to make it fit for the next generation and considers this initial phase of work to be the start of a longer-term renovation project.

Events and services in the building have been temporarily moved to new locations nearby and the Council is currently working on plans to provide a more stable location to accommodate library services in Northwich while the building is closed.

Alternative facilities are available at Sandiway, Barnton and Weaverham libraries which are open and will be offering extended opening hours while Northwich is closed.

Online services, including eBooks, can be accessed 24 hours a day at www.cheshirewestandchester.gov.uk/libraries.

Ladies' lunch in September

September's lunch will take place on **Thursday, 15th at 12.30** at the Cock o' Budworth. Please contact me if you'd like to join us as I shall need to book a table.

Hazel Forwood (01606 891908).



National Harvest Festival 2022

Great Budworth Ice Cream Farm
 New Westage Farm
 CW9 6ND | 12pm-9pm
www.icecreamfarm.co.uk

Harvest Torch arriving 12:30pm

curbishleys roses

Bate Heath Rose Nurseries
 Aston-by-Budworth
 Tel: 01565 733286

Superb range of roses always available. Wide range of rhododendrons, azaleas, conifers, acers, clematis & many more shrubs & climbing plants of exceptional quality and at realistic prices.

GARDEN CLUB

The heatwaves in July, then again in August, have been very difficult for us gardeners to cope with. We could only go out early and late - and even then only in the shade. It seems that this climate change is the future, so we must adapt and plan what we grow, and how we manage our gardens.

We had our Members' Evening with strawberries and cream in July. Committee members prepared the strawberries and June Wilkinson chaired the evening brilliantly. A large audience came to watch our member, Maggie Earl, give a demonstration of flower arranging, with all her wonderful arrangements given as raffle prizes. Maggie asked for a volunteer from the audience to make a tied bouquet with her. Our treasurer, Neil Harvey, came forward to take part, and made an admirable job of his arrangement. Both are pictured here. Well done, everyone. It was a great evening and the vote of thanks was given by Joan Broughton.



There was no meeting in the hall in August, but we did visit a member's garden in Plumley, and were delighted to see the beautiful garden of Rose Jones. We thank you so much for allowing us to come and enjoy. On another evening we visited Plantagogo, the nursery near Nantwich, and in August we enjoyed another visit to the RHS Bridgewater Gardens in Salford (pictured). All great events, with hospitality amongst members.



We start again on the 13th September at 7.30 with our annual Produce Show. The schedule is in the members' newsletter, or contact me for more details. The produce will be judged by Sue Beesley and there will also be a talk by Robert Barlow on hostas. We need a couple of members to volunteer to serve teas that night, so if you are willing to help do please contact me ASAP.

We are organising a full day coach trip to the Harrogate Flower Show on Friday 16th September. The cost is £40, which includes coach, show entrance and entrance to Newby Hall. This trip is open to all villagers and non-members.

I hope you have had a good summer and are ready to start again in your gardens.

Jean Davies
07899 937 673.



WI JUMBLE SALE

We have a date and time for the Great Budworth Jumble Sale, so now we need lots of pre-loved and unwanted clothes, gifts and bric a brac. This is Great Budworth's Grand recycling event on :-

SATURDAY 10th SEPTEMBER at the Parish Hall at 11am.

We will be in the hall the afternoon before (Friday) from 4pm to receive goods.

Tea & coffee will be served at the Jumble sale. Tradition has it that you buy the coffee and keep the cup so we need mugs and cups too! We will need plenty of help on the day especially around 10.30am.

Mobile Library Provision – Public Consultation

We are asking for your views to shape the service provided by our Mobile Library. The Library Service will be introducing a new modern mobile library later this year. The new vehicle, which will replace the existing mobile library vehicle, will be fully-electric and therefore much cleaner and greener. Other sustainable features include solar panels and LED lighting. There will also be improvements to services offered, such as an awning for summer activities and onboard Wi-Fi and digital access for customers.

Proposals include enhancing some stops by adding activities, such as a Storytime or Craft Session in partnership with community centres or village halls; reviewing existing stops on a six-monthly basis; and withdrawing five stops that are not well used, but adding three additional stops, some near to the stops



being removed from current mobile library routes.

Full details of the proposal, existing routes and proposed routes are available here:

www.cheshirewestandchester.gov.uk/mobilelibraryconsultation

CHURCH NEWS

SERVICES FOR SEPTEMBER:

Thursday 1st	7.30pm	Celtic Evening Prayer (in the Quiet Garden, weather permitting, or Lady Chapel)
Sunday 4th	8.00am	Holy Communion BCP
	10.30am	All Age Worship
Wednesday 7th	10.30am	Holy Communion CW
Sunday 11th	10.30am	Matins BCP
	6.30pm	Holy Communion CW
Saturday 17th	2.00pm	Wedding
Sunday 18th	8.00am	Holy Communion BCP
	10.30am	Parish Communion CW
	6.30pm	Evensong at Arley Chapel BCP
Friday 23rd	12.00 noon	Wedding
Saturday 24th	12.30pm	British Food Fortnight - National Harvest Torch visits the Ice Cream Farm, Great Budworth
Sunday 25th	10.30am	HARVEST FESTIVAL IN CHURCH
	3.00pm	National Harvest Festival in Chester Cathedral (3.00pm)



OCTOBER

Sunday 2nd	8.00am	Holy Communion BCP
	10.30am	Animal Blessing Service

EVENTS

Saturday 10th September Heritage Day

Sponsored cycle ride in the morning
 2.00pm to 5.00pm: Events in church to include: Tours up the Church Tower (last entry 4.30pm)
 Music recital – Stephen Reynolds
 Talk by our church historian – Robert Steele
 Guided walk around the village 4pm – Rev Alec Brown
 A small number of stalls.

'Hold Excalibur' – by Dan Freeman

A new live production of the story of King Arthur, with words, music, clever lighting and the backdrop of St. Mary and All Saints Church.

6th, 7th and 8th October 2022 7.30pm – for adults and children aged 8 and over.

NOTE: THIS IS ALL PROVISIONAL AS THE BULLETIN GOES TO PRESS, STILL AWAITING FINAL CONFIRMATION THAT IT IS GOING AHEAD.

If it goes ahead, we will advertise on the website, weekly sheet, posters etc.

A farmer responds ...

Early in August a number of residents vented their frustration via the village WhatsApp about the condition of local roads, the danger of certain junctions and, not least, the excess speed of some drivers. Implicated in this sympathy-fest were drivers of tractors. At this point, Dave Wilkinson (pictured), local farmer and normally mild-mannered man, felt it was time he spoke up for the maligned tractor-driving community. We thought his thoughtful response was worth disseminating beyond the village WhatsApp and so, with Dave's permission, we reproduce it here.



After reading all the comments this morning I thought I'd give the view point of the agricultural sector.

A 40mph speed limit would be fine as the majority of tractors nowadays can only travel at 28-30mph with very few being able to do 35-45mph.

Tractors and equipment have got bigger in the last 15 years because farmers and contractors to have to travel further to find land to grow crops, as the number of farms decreases. So it doesn't help when residents place stones or other objects along verges which then have to be avoided when meeting on-coming traffic!

It also doesn't help at junctions when the line of sight is obstructed by foliage from private properties being at least six to eight feet higher up than when you are in a car, so that you have to pull out further into the junction to check for traffic - which also can't see the tractor as it's obscured by leaves.

Finally, when it comes to bad bends, if hedges are left to grow taller in order to increase privacy it becomes more of blind corner for when traffic meet. If you had a better view of what was oncoming then the tractor driver would be able to avert any surprise meeting on the bend.

So that's just the view of a farmer/tractor driver, but sadly you can't account for any wannabe Max Verstappen or Lewis Hamilton on the roads.

NJ Garden Maintenance

Neil Jones, local gardener with an established Great Budworth and surrounding area clientele, now available for all types of garden work, from regular grass cutting to hedge maintenance and one-off garden tidy ups. Licensed to remove all your garden waste.

Friendly and reliable service, now taking bookings for this season.

Large or small, give us a call.

01606 350793 or 07977 105380



SHELDONS

Whitehouse Dairy
 Your Local Dairyman
 & Newsagent

- ◆ We sell other local goods: eggs, potatoes, fruit and veg
- ◆ We operate a 'milkwatch' scheme, keeping our eyes & ears open in the early hours

Tel: 01565 634509

www.sheldonsdairy.co.uk



GREAT BUDWORTH CRICKET CLUB (GBCC)

Cricket has been a beneficiary of this amazing summer weather we've been having. Matches at the picturesque Arley cricket ground have produced some high scoring, exciting games. The only game to be abandoned owing to the weather was the match against ECAD (English Cricket Association for the Deaf). This is an annual match played for the Peter McAndrew Shield in memory of the club's late chairman and is normally the highlight of the season.



Now that we are into September there are still two home matches to be played: on Saturday 10th September against Lord Ashbrook's X1 (it's an 11:00am start); and on Sunday 18th September against Antrobus, with a 1:00pm start. Everyone is welcome.

Here are some scores from recent matches.

GBCC 152 for 9 in 30 overs. M. Hankey 41 not out. R. Batey 49 not out.

Manchester Racquets 153 for 9 in 29.5 overs. A. Eaton 41. T. Higson 27. R. Batey 3 - 16. *Match lost.*

Barnton 158 for 3 in 20 overs.

GBCC 138 for 8 in 20 overs. D. Curryer 31. P. Taylor 26. *Match lost.*

GBCC 211 for 6 in 30 overs. P. Lancaster 47. Matt. Hankey 47 not out. A. Horn 28.

Kingsley 153 all out in 28 overs. R. Ford 3 -16. S. Osborne 3 - 47. *Match won.*

The maze this year at the Ice Cream Farm is a sunflower maze. It has to be seen to be believed (see below). We thought we would give the sunflowers a go, and we are more than amazed at how well they look. If you have the chance, do come up to see for yourselves. The other amazing thing is each sunflower bloom has busy, busy bees collecting the nectar for honey.

It's a win win !!
June Wilkinson



SOOT HILL UPDATE

Following ground penetrating radar surveys and ground investigation works, CW&C has now moved to the next stage of this repair project and signed a contract with Balfour Beatty plc, a well-known, national contractor. Working with design consultants, Ramboll, they will now develop solutions to repair the landslip. Although the contract has just been formalised, the Council has been working with Balfour Beatty since March to ensure they could offer advice from the earliest possible stage in case of potential issues later.

Specialist expertise will be needed, including structural, geotechnical, drainage and highways engineers. These engineers will review and interpret the ground penetrating radar site surveys and ground condition investigation results, undertake load-bearing and road level calculations and then create the complex technical designs needed to ensure the permanent stability of the landslip area.

Scottish Power has advised they will be moving their live voltage cables in September. It has also become apparent that owing to the extremely heavy plant and machinery needed to carry out the repairs, a water main at the site will also need to be diverted.

Previous activity at the site

The ground penetrating radar surveys and ground investigation works mentioned above required bore holes to be drilled through the road surface into the ground below, to a depth of 20 metres, to find out what material was underneath the site. Before that, residents and businesses saw activity at the site as work started to secure the high voltage cabling, power supply and other piping in the area.

It's not currently safe to access the site owing to the risk of further collapse material falling onto the site.

Source: CW&C Transport & Highways



Maggie's flowers
A full florist service for all occasions on your doorstep. Fresh flowers a speciality. Some varieties grown on the farm - cut fresh to order. Please ring or email:
maggie@maggiiearl.co.uk
07970 927 161 or
01565 777262

SCHOOL 100 CLUB DRAW

July
Winners

1st: 82 - Julie Hamilton
2nd: 23- Tracy Cartwright

THE NEW FRIENDS OF ARLEY

Friends of Arley was launched nearly 30 years ago by volunteer groups. Since then, we have raised nearly £100,000 to help improve features on the Estate. We must remember that Arley is a private family home, with 2,000 acres and world-famous gardens that are beautifully maintained by a small team of very professional gardeners, as well as a shop and an estate office that is responsible for attracting functions, such as weddings, along with many other events including filming, Peaky Blinders being the most famous (or notorious!).



To fulfil its function and to be viable, our membership needs to be in the region of 250. In pursuit of this goal we have totally restructured the membership package, making it varied and able to suit the needs of all its members, as well integrating it within the normal everyday structure of the visitor requirements. For example, the Annual Pass is

now part of the Friends of Arley Membership deal, but this is still optional for those who do not wish to visit more than ten times a year. Each of the Membership packages offers discounts that, if used frequently, will cover the cost of membership – and more.

For those who live in the areas surrounding Arley, the value of the Membership package is excellent, giving the opportunity to make the most of your visits in the summer and winter.

As well as membership fees, we raise funds by organising many and varied talks during the winter and social events in the summer. To date, the monies raised have paid for the beautiful fountain in the walled garden, the fruit cage in the kitchen garden, and the kneelers in the chapel, as well as the retiling of the altar, the cleaning of pictures in the Hall, the supply of garden tools for the volunteer gardeners and play equipment in the children's picnic area.

Included in this issue of the Bulletin is a flier with all the details of the membership options, including a very simple membership form to complete online, as well as online bank payment details. You can call us anytime with any questions you may have.

I hope one of these generous packages will appeal to you and that you will take advantage by joining – or re-joining – the Friends of Arley. A warm welcome awaits here at Arley, one of the nicest, friendliest and most beautiful homes in the UK. Thank you.

Julian Beavan, Chairman, Friends of Arley.
E: julianbeavan@gmail.com M: 07831 472718,
H: 01565 777432.



AN UNEXPECTED VILLAGE TREAT



For those who were around on Tuesday, 12th July, the centre of the village was treated to a fine display of Morris dancing. I'm afraid we don't know the name of the troupe or where they came from - and their appearance was, for most of us anyway, a complete surprise. Still, the sheer serendipitous nature of such surprises is part of the pleasure!

Bram Taylor & the Country Folk in aid of the Ukraine

We are holding a Folk night with Bram Taylor and the Country Folk
at the Parish Hall on Friday 30th September from 7pm .

Some of you have heard Bram before, but if you haven't, you are in for a lovely evening. Tickets are £10 each with a pie & pea supper and a happy evening listening to Bram and friends.

Bram is performing his music for free and has a selection of CDs for sale, all for the Ukraine. We hope to make a good sum to help our friends in that war-torn part of this world. There will be a raffle for the cause, so prizes are needed as well.

We intend to serve the supper before the singing starts, with local pies from Roger Pace (of Stanways), along with peas, garden or mushy!!

Tickets are limited as our hall is not large, but we can make it a special night for a good cause. Tickets are available from June Wilkinson 891534 or from the Ice Cream shop.

A meeting of Great Budworth Parish Council was held on Monday 11th July in the Parish Hall. The following is a summary of the proceedings. Full minutes of the meeting are available on the Great Budworth website.



- Public representations included comments about **parking on Westage Lane**, which was thought often inconsiderate and frequently created road traffic hazards. The Parish Council considered there was no easy solution to this problem.
- **Crown reduction on the Holm Oaks** at the top pumphouse: approval was given by the Parish Council for a contribution towards the works to be undertaken in the autumn.
- **Bowling Green and Tennis Club Agreement**: it is hoped that this will be signed before the next Parish Council meeting in September.
- **Queen's Platinum Jubilee**: the celebrations had made a modest surplus and the Parish Council considered the celebrations a credit to the village.
- **Filming in the village**: the Parish Council has been approached with a view to carrying out a small amount of filming in the village (see below for further details). The Parish Council considered it important that the production company liaises with those villagers that might be affected by the filming.
- **Speed monitoring**: a recent exercise in monitoring motoring speeds along Westage Lane and High Street showed that most vehicles complied with the limits; though there were a few vehicles that exceeded the limits by a margin. On the basis of local and national guidelines, police enforcement is extremely unlikely.
- **Co-option of new Parish Councillors**: Justin Culver and John Gill were co-opted to the Parish Council for the remainder of the term of office until May 2023

Date of next meeting: Monday 5th September. All are welcome to attend.

Filming in the village

By the time the Bulletin is published, there should have been two film crews round the village. Each was scheduled to last one day. The first was for a BBC series and should not have involved much in the way of disruption; any traffic delays should have been limited to not more than 5-10 minutes at the very most (the brevity of filming being for the health and safety reasons of the children being filmed). Individual inhabitants of the village have received a modest reward for using their front doors. Some of these rewards have been donated to charity. The Parish Council has also received a modest sum towards parish projects.

The second occasion was for more complicated filming for Channel 4 and an American production company. This did involve closing a part of Church Street for some hours, but a significantly greater donation (£2,500) was received by the Parish Council and I understand that residents who were affected have also received some modest compensation. This filming is for a television show which will appear both on US screens and on Channel 4. Arley Hall and Peover Hall were also locations being used.

PARISH COUNCIL ADMINISTRATION

As many residents will be aware, we have been without a Parish Clerk for some months. The Parish Council does its best to monitor emails coming in, but I am told that one or two emails have been ignored or lost in the system. We are doing our best: I apologise if you have not had an instant informative, constructive response, even in those cases where the Parish Council has absolutely no influence whatsoever. I very much hope that we will improve the service in the coming weeks. If you feel you not had an adequate response, please send the email once more to: greatbudworthparishclerk@gmail.com.

Don Hammond,
Chairman of the Parish Council Budworth [and sort of acting Parish Clerk]

MEET OUR NEW PARISH CLERK!

Great Budworth Parish Council is delighted to announce that it has appointed Helen Bashford-Malkie (pictured) as its new Parish clerk with effect from 1st September. Helen will be known to some villagers as she is the daughter of Kay Bashford. She was a candidate for the European Parliament and now lives in Antrobus and has an active business background. She also has a significant interest in golf and motorsport.



Don Hammond, Chairman, Parish Council



Right at Home Mid Cheshire
Quality care services in the comfort of
your ownhome

If you or a loved one are looking for high-quality care, companionship or support for complex conditions, contact Right at Home Mid Cheshire for more information.

Contact us: 01606 537400
www.rightathomeuk.co.uk/midcheshire

Dog Walking

If you are located in the Great Budworth area and are looking for a local caring dog walker, I am available for daily walks, toilet/feeding and general care and attention visits. For your dog's individual requirements/needs, please give me a call.



Emma: tel 01606 891 229;
07704 074 979