

DATES FOR YOUR DIARY

For details of Parish Church events, please see page 15

APRIL

Monday 1st: Ice Cream Farm opens for the season, 12 noon—6.00pm

Wednesday 3rd: Parish Hall, 7.30pm. WI Open Meeting. Speaker: Derek Poulson

Tuesday 9th: Parish Hall, 7.30pm. Garden Club meeting. Speaker: Harry Delaney, Reaseheath College

Wednesday 10th: WI visit to Tatton Home Farm.

Saturday 12th: Antrobus Village Hall. Antrobus WI Car Boot Sale (timings not available)

MAY

Thursday 2nd: Parish Hall, from 7.00am. Local elections

ICE CREAM FARM

The new season begins on the 1st April, 12noon to 6pm. Lunches are served daily until 2pm and ice cream is available in cones and cartons, so we look forward to another busy season. Long may the sun shine !!!



ANSWERS to 'Where in Great Budworth?' (page 8)

- | | |
|------------------------------|--|
| 1. Westage Farm (roof ridge) | 2. Top Pump House (above notice board) |
| 3. 50 Church Street | 4. Bakery Cottage (14 High Street) |
| 4. School Lane | 6. Westage Lane |



LADIES' LUNCH

April's lunch is on Thursday 18th at 12.30pm at *The Smoker pub, Plumley*. Newcomers are always welcome. Contact Hazel on (01606) 891908 for further information.



The Budworth Bulletin is printed by **Rankin Graphics**

Phone 01606 42808 or 0161 926 9680

Reprographics - PrePress Services - Printing Plates - Digital Print

BULLETIN COMMITTEE

Jenny Bowman
Anna Lee

891431 ----- jenny@fagitta.plus.com
892352 ----- annalee1@btinternet.com

BUDWORTH BULLETIN

April 2019



GARDEN CLUB

Wet and windy March followed the mini heatwave in February - yes, it really was that way round!

However, we gardeners were unperturbed and we had another full hall in March, during which final annual subscriptions and holiday money were due. We then heard our excellent speaker, Colin Hickman (*pictured*), who brought tables full of plants to talk about and to sell. His family own a nursery, Hoyland Plant Centre, near Sheffield, which specialises in agapanthus, clivia and nerines.



He showed us each bulb and how to propagate and look after each plant according to its needs. He was a very good speaker and all of us learnt so much that night. Not surprisingly, he was asked many questions, and was thanked on behalf of us all by Jerry Bentley.

Our next meeting is on 9th April, when we have our spring bulb competition. The speaker is Harry Delaney, of Reaseheath College. Harry has visited us many times and will be showing us 'aspects of Spring work', a perfect Spring talk. We can expect much 'cutting and snipping' from Harry, a very practical man. Visitors are welcome to this meeting.

If anyone wants information of any kind, please contact me in the first instance.

Jean Davies. 07899 937 683 / 01606 892 383.

MC

10, Bramhalls Park,
Anderton, Northwich
Cheshire, CW9 6AH

CHAUFFEUR TAXI SERVICES

AIRPORT TRANSFERS - PRIVATE HIRE
PROFESSIONAL AND RELIABLE
Call Michael Green on
T: 01606 781467
M: 07784 217640

NJ Garden Maintenance

Neil Jones, local gardener with an established Great Budworth and surrounding area clientele now available for all types of garden work, from regular grass cutting to hedge maintenance and one-off garden tidy ups. Licensed to remove all your garden waste.

Friendly and reliable service, now taking bookings for this season

Large or small, give us a call.

01606 350793 or 07977 105380

CHURCH NEWS

March

Sunday 31st, 10.30am: Mothering Sunday All Age Worship

April

Wednesday 3rd, 10.30am: Holy Communion followed by coffee

Sunday 7th, 6.30pm: Ecumenical 'Stations of The Cross'

Monday 8th, 7.45pm: Annual Parochial Church Council Meeting

Thursday 11th, 2.00pm: Play and Praise

Sunday 14th, 10.15am: Procession with branches from Village Hall

10.30am: Service 'Liturgy of The Passion'

Thursday 18th, 1.30pm: Great Budworth School Easter Service

Thursday 18th, 7.30pm: Maundy Thursday Holy Communion / Stripping of the Altar, **followed by Vigil** until 10pm

Friday 19th, 2.00pm: Good Friday Meditations at the foot of The Cross

3.00pm: Short Evening Prayer

Sunday 21st, 8.00am: Easter Day Holy Communion

10.30am: Family Communion

(please note - there will be no service at Arley Chapel on Easter Day)

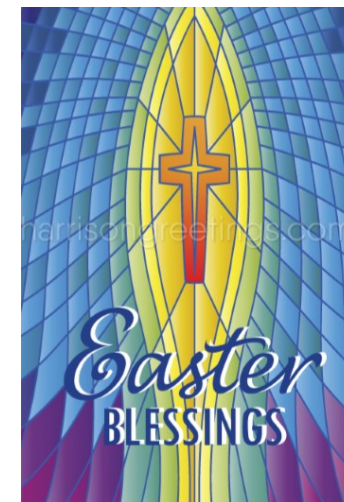
Sunday 21st, 2.00pm: Church Teas commence.

Compline/Evening Prayer

This will be held through Lent at 7.00pm in the Lady Chapel on Thursday evenings: 21st, 28th March & 4th, 11th April, followed by discussion group in Comberbach at 7.30pm.

All other services are as normal

Everyone is welcome to all or any of the services. We would love you to share in this important time of year in the church's calendar.





HILARY BRUDENELL

As many readers will already be aware, Hilary Brudenell, of School Lane, died on Friday 15th March. Her funeral took place in our Parish Church on Friday 29th March. Hilary served the community in a variety of ways over many years, including, most recently, as Chair of our Parish Council. A more detailed appreciation of her will be included in our May issue. May she rest in peace.



Maggie's flowers
 A full florist service for all occasions on your doorstep. Fresh flowers a speciality. Some varieties grown on the farm—cut fresh to order.
 Please ring or email –
maggie@maggieearl.co.uk
 07970 927 161
 or
 01565 777262

PADDY PAWS HOME-BOARDING DOG DAY CARE

We look after all your dog's needs. Dogs live in the comfort of our home and are taken for walks in the countryside whilst you're away on holiday or at work.



Call Judy/Anna on 01606 891536
 07719 576128
 Hilltop Farm, Aston-by-Budworth,
 CW9 6NG
 Licensed, fully insured & DBS checked

An Ex-quiz-ite Evening

A big thank you to everyone who came along to the Heritage Society's Quiz on 21st February and also to all those who helped in their various ways on the night. Fifty plus contestants tackled Anna Lee's questions, carefully chosen to tax the memory rather than bewilder us all. Scores came out quite high and the winners were a crack team from Comberbach – and the wooden spoon went to ... well, we'll spare their blushes!



At half-time, fortified by a splendid hotpot produced by Richard Elias, contestants attempted to identify anagrams of world cities and name a sheet of car identity symbols. Needless to say it was thirsty work!

Counting up next day - and including a couple of donations from wellwishers - the Quiz made a very pleasing £600 profit which, as promised, will all go towards the Parish Council's project to repair the Running Pump at the bottom of High Street and improve its surroundings. There are several skilled but separate parts to the work needed, so it's taking the PC a bit of time to line it all up.

Rod Bowman



The Cock @ Budworth
 Warrington Rd, Great Budworth, CW9 6HB
 01606 891287

Michelle and the team wish you a warm welcome to The Cock @ Budworth. We are very proud to offer a fantastic range of award winning Joseph Holt lagers and real ales, as well as a delicious home cooked menu. Mondays are 2-for-1 on our main courses all day (excluding grills), and Thursday is steak night: 2 steaks and a bottle of house wine from £35.

In our restaurant we can cater for any occasion: christenings, anniversaries, baby showers, birthday celebrations, or funerals.

To enquire about reserving our restaurant for a function or to book a table please ring 01606 891287. Our team will be pleased to help you.

PAULINE JORDAN MOVES ON

Pauline moved to live in Davenham Hall Nursing Home in early February this year. Many villagers will know her as a very friendly lady who enjoyed chatting with all she met on her walks in the area.

Born in Derby, Pauline lived in Parbold, Lancashire, where she worked for BoC, before moving to 37 Westage Lane in the mid-1980s, when it was a brand new property. Pauline worked part-time at the Smoker Pub in Plumley until four or five years ago.

Pauline's very dear companion on her frequent walks was her black Labrador, Poppy, who sadly had to be put down last year.

Pauline loved her house and enjoyed tending her garden, but her declining health over the past few years sadly reached a stage when she was no longer safe living on her own. We wish her well in her new surroundings.



Church Teas

Thank you to everyone who came along to the coffee morning we held to set the rota for Church Teas 2019. It was great to catch up with you all - and we have filled most of the dates for the season. There are one or two spaces left, though, so if you would like to undertake yet another one, please have a word with Margaret 07732 324 001 or Maggie 01565 777 262.

Need a solicitor? Then go local!

Based in Northwich town centre and established for over 20 years, Susan Howarth & Co. Solicitors, specialise in Family Law (including Family Mediation), Child Care, Residential Property, Wills & Probate (including Care of the Elderly) and Personal Injury.

We're proud to be listed in the Legal 500 Directory and to be Lexcel-accredited in recognition of our high standards of practice management and client care.

We offer 6 FREE legal drop-in clinics every week or a FREE 30 minute consultation.

At Susan Howarth & Co., we're here to help.

Address: 41 Chesterway, Northwich, Cheshire, CW9 5JE

Tel: 01606 48777 | **Website:** www.susanhowarthsolicitors.co.uk



Don't fall for



phone scams

BEWARE!

You may, like us, have had some recent telephone calls claiming to be from Ofcom. The cultured male voice then warns you that if you fail to make some changes to your account, your broadband will be cut off in the next few days. The caller then asks you to hold the line while he connects you to a person who will help you. A few seconds later a South Asian voice comes on line. At that point I disconnected the call, but not before noting, on caller display, that the call said it was coming from a local number, i.e. 01606 55....., indicating it was from Winsford. We tried calling back, but the 'mailbox was full'.

As this was not the first such call we had received I decided to contact Action Fraud. They were well aware of the scam, but wanted as much detailed information as possible: time of call, number on caller display, words used, as well as information about the operator I was passed on to, which unfortunately was scant as I had disconnected the call. The Police are collecting evidence in the hope of being able to take action.

Action Fraud are keen to hear from anyone who has received such calls, particularly about the discussion with the operator you were passed to.

Action Fraud can be contacted on 0300 123 2040. Or www.actionfraud.police.uk

I have recently been told of unsolicited calls claiming to be from HMRC, saying that they need bank details to enable them to return a tax rebate. Also calls from someone offering a year's supply of Lottery tickets for £50.

There are many scammers trying to get hold of your money - DON'T GET CAUGHT!

Jenny Bowman



A BIG 'THANK YOU' ...

... to the Big Boys for their very generous donation of £100 to the Budworth Bulletin. We appreciate it very much indeed. It will help us to continue having the Bulletin printed in full colour on good quality paper.

The Bulletin Team

SCHOOL NEWS

On Wednesday 13th March we had a whole school trip to the Manchester Museum of Science and Industry (MOSI). Some of the children from Class 3 wrote about it:

“My favourite part was the steam engine show. We learnt about how they work and we saw it moving.”

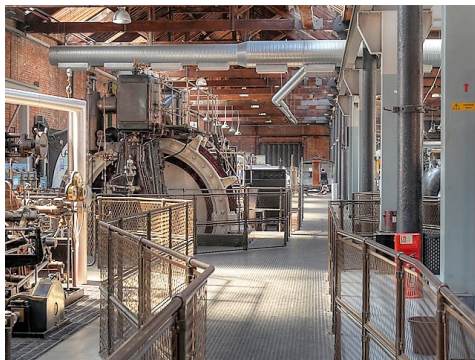
“My favourite part was the gravity and friction show. We learnt that friction slows things down and Mr Holland jumped out of a plane to see if the parachute would slow gravity down.”

“My favourite part was the Science Showdown. We learnt about electricity and how things like pedalling a bike can be used to create electricity.”

“My favourite part was the experiment area. We did lots of experiments and one of them was lifting a mini. We had to spin a wheel and the mini would go up and down.”

Hilary Brudenell

We would also like to take this opportunity to recognise the outstanding contribution made to our school over the last ten years by Mrs Hilary Brudenell. During her time as a school Governor, including the last four years as the Chair, Hilary devoted a considerable amount of time, energy and wisdom to ensure vital improvements and to secure a long-term stable future for our village school. She will be sadly missed by all in our school community and we send our grateful thanks, thoughts and prayers to Keith and the family.



The Power Hall, MOSI



Sales of all types of new and reconditioned machinery. Experienced in serving all types of garden machinery. Sharpening of bowling green and domestic cylinder mowers. For all your garden machinery needs, contact us at:

www.bladesmowers.co.uk

bladesmowers@yahoo.co.uk

Telephone Bob 01925 470323 / 01565 777057

Mobile: 07803 936405



At our March meeting members enjoyed an excellent talk by Graeme & Naomi Simister about the work of the Children's Adventure Farm Trust at Millington. This is a voluntary holiday farm for disadvantaged and terminally ill children to take a break and to give them quality time.

A raffle was held to provide a donation to help to further their very

worthwhile work, which was a delight to hear about.

Seventeen members went to the County AGM at Northwich's Memorial Court to hear a talk by world champion gymnast Beth Tweddle, who is a Cheshire Girl. Beth described how hard she worked to gain her Olympic Bronze Medal. We felt so proud of Beth and the way she handled the ups and downs of competing at world championship levels.



The WI Jumble Sale was a great success, mainly due to all the super quality jumble and the hard work of everyone involved. We served coffee at £1 per mug, which included the mug for free - brilliant marketing, don't you think?! Many thanks to you all. We passed on all unsold better quality clothes and bric-a-brac to charity shops who were most grateful.

Ten of us enjoyed a willow-weaving course in the Parish Hall at the end of March, so I hope the results will be shown at the meeting on 3rd April, when the speaker will be Derek Poulson, whose subject is 'It ain't what you say'. Derek comes highly recommended and is an expensive speaker, so we would like to open the meeting to visitors, as many as possible, to hear his hilarious talk. If you have never been to the WI or are new to the village then this is an ideal meeting to join us. The cost of entrance is £5, which includes tea and cake, so give us a go and come along to the Parish Hall on Wednesday 3rd April at 7.30pm. A warm welcome is guaranteed.

The WI have been invited to Tatton Home Farm for the evening of Wednesday 10th April at 7pm for a walk and talk, followed by refreshments. They are hoping to encourage groups to visit, so are having a few taster evenings and we are among the lucky ones. Sensible footwear is essential as there are lots of cobbles!

June Wilkinson tel. 891534



GREAT BUDWORTH CRICKET CLUB

The Cricket Season at Arley begins in May.

We hope to welcome all members and friends to our matches during the summer and invite anyone who is interested in playing to give Peter Mc Andrew a ring on

01606 891313.

Help!

Are you familiar with PhotoShop? Or do you know someone who is? I'm looking for someone willing to help an old man master this program!

Alan Bailey 891149 baileyalan4@gmail.com



FOR SALE

Samsung White, American Fridge Freezer

£350 or nearest offer. Bought in April 2018, still in warranty. Perfect condition. Collection Only - Mid April !!

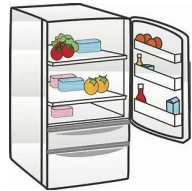
Also

French Extra Large Floral Rug

18' x 12' Good condition. Overall main pattern light brown leaf pattern, edging floral with a touch of red, beige and

pale green. Welcome to view. Collection anytime £150.

Contact Pauline on 01606 891 259 or 0771 252 8350.



JNS Facilities Limited provide a quality service to the highest standard in the most economic, efficient and effective way. Clear cost savings for repeat business will always be implemented.

- All your building and decorating needs catered for.
- SkyVac gutter clearances from £50, essential at this time of year.

Other services include:

- Ground maintenance and tree surgery
- K Pole window cleaning
- Internal high level cleans with the use of the innovative skyVac, perfect for offices and retail outlets.

Please go to our website to see our full range of services - jnsfacilities.co.uk

Contact Phil on 07931 434698 or email info@jnsfacilities.co.uk

councils, health authorities, police etc. These organisations know that a Parish Council gives the best reflection of how a community feels about something and its views should be taken seriously.

How much time does it take up?

Our Parish Council meets every two months. Members of the public are invited to these meetings. Meetings may last two or three hours, depending on what's on the list of items to discuss. Some councils may also have committees to deal with specific subjects, such as planning matters.



How long do I serve for as a Parish Councillor?

Once elected, Parish Councillors sit on the council for four years. If they then want to stay in the post they can stand for re-election. This does not mean that you have to stay for four years. If you find it's not for you, or you can no longer meet the commitment, you can stand down.

For more information please contact the Parish Clerk on 07907 456 037 or email: greatbudworthparishclerk@gmail.com

It's official - people gain wisdom with age!

Listen (via BBC iPlayer) to the episode of The Digital Human, broadcast on Monday 18th March at 4.30pm on Radio 4. The presenter, Alex Krotski, examines some apps. that enable users to tap into the collective wisdom of older people and finds that not only are the apps. becoming popular, but the advice given is surprise, surprise ... WISE !



D & P M SHELDON

Whitehouse Dairy

Your Local Dairyman & Newsagent

- ◆ We sell other local goods: eggs, potatoes, fruit and veg.
- ◆ We use fresh milk from Booths Hall Farm, Knutsford
- ◆ We operate a 'milkwatch' scheme, keeping our eyes & ears open in the early hours

Tel: 01565 634509

www.sheldonsdairy.co.uk



Dog Walking



If you are located in the Great Budworth area and looking for a local, caring dog walker, I am available for daily walks, toilet/feeding

and general care and attention visits. For your dog's individual needs/requirements, please give me a call.

Emma: tel 01606 891 229;
07704 074 979

The next elections for Parish and District Councils take place on Thursday 2nd May 2019

Become a Parish Councillor

The best way to find out what it's like to be a Parish Councillor is to talk to someone who's doing it now. Your Parish Council has a website greatbudworth.com where you can get the names and contact details of the current Clerk and Councillors, and the dates of their meetings. By becoming a Parish Councillor you become someone your community will look to for help, guidance and support as a community leader, with the power to influence decisions for the benefit of the people you serve.



Getting Elected

To stand for election to a Parish Council, you must:

- be a UK or Commonwealth citizen; or be a citizen of the Republic of Ireland; or be a citizen of another Member state of the European Union;
- be at least 18 years old;

To be eligible to stand for election for a particular Parish you don't have to be connected to a political party but you must:

- be an elector of the Parish
- or
- in the past 12 months have occupied land or other premises in the Parish (as owner or tenant)
- or
- work in the Parish (as your principal or only place of work)
- or
- live within three miles of the Parish boundary.

What do Parish Councils do?

A Parish Council is a local authority that makes decisions on behalf of the people in the Parish. It is the level of local government closest to the community, with the district authority and the county authority or a principal authority further up the hierarchy.

Parish Councils make all kinds of decisions on issues that affect the local community. Probably the most common topics that Parish Councils get involved with are planning matters (they are statutory consultees), crime prevention and roads & highways.

Parish Councils have a number of powers they can use and have the ability to negotiate with other decision making organisations such as the district, county or unitary

The Parish Council met on Monday 4th March. The following are some of the items discussed and decisions made.

Westage Lane

Cheshire East confirmed that the roadworks have been finished and the road is now open again.

Parish Hall

The Chairman of the Parish Council had held an informal meeting with the Chairman of the Parish Hall Committee and Mr Wilkinson to discuss the future relationship between the two bodies (NB: the Parish Council owns the Parish Hall). This was prior to a meeting of the Parish Hall Committee scheduled for the 13th March.

Village Website

The new improved website was favourably reviewed. It was agreed that whilst the Council wished to maintain editorial control over news items and events, it was hoped that local organisations would keep their own pages of the website up to date. The Clerk would continue to post all Parish Council meeting documents on to the website.

Lower Pumphouse

Quotes for the proposed renovations were still awaited. This work will be funded in part by the Heritage Society, which initiated the project and taken a close interest in progress.

Replacement of Broken Stile on The Avenue with a Kissing Gate

It was agreed that WAP Lawton would be approached with a view to their undertaking this work. (NB: this work has since been completed. See the photo, below right.)

Lime Trees on High Street

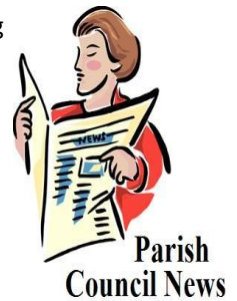
Work to replace the dead lime trees was scheduled to begin soon. (NB: this work has since been completed. See the photo, below left.)

Centre Village Parking

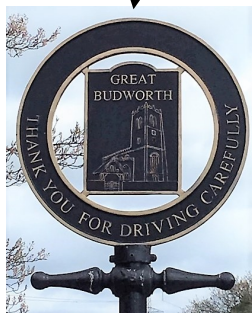


The Council agreed to look into the provision of thin yellow lines in the centre of the village to discourage inconsiderate parking (on the understanding that disabled drivers can legally park on these).

The next meeting is scheduled for 13th May 13th. Members of the public are welcome to attend.



Where in Great Budworth? (Answers on back page)



HERITAGE SOCIETY

Clean up for Spring

Meet at 1pm by the Church, the missive said. Five volunteers from the Heritage Society turned up with buckets, scrubbing brushes, a sprayer and red cones.

The job in hand was cleaning up the village's road signs and, as it promptly started to rain, the best idea seemed simply to get stuck in before it got any worse.

A previous recce showed that the dirtiest traffic signs were under trees or on the main road, but street names on walls needed de-spidering too. The biggest surprise came just up from the bottom pump house, on the A559, where a large sign was illegible beneath a layer of green mud. Wearing orange coats and wielding a sprayer and a long brush, two of us revealed this to be the bright blue weight limit warning to traffic entering the village!

Some of the village's street nameplates could do with a proper repaint, however, and the 'Great Budworth' sign just south on the A559 is peeling and bent. Its partner sign to the north outside Belmont disappeared some years ago.

Rod Bowman

(Our thanks go to the hardy team of 'scrubbers' who undertook this noble task on behalf of us all! Ed.)



The Heritage Society's spring cleaners, from l to r: Karen Hammond, Rod Bowman, Chairman of the Heritage Society Malcolm Torrance (hiding behind the long brush!) and Don Hammond. Richard Elias, the fifth cleaner had gone on ahead

Antrobus Executive Travel

Private Hire
4-seater vehicle
Local or distance
01606 891 692 (office)
07710 211 364 (mobile)
alan@aetravel.co.uk
Pre-bookings only

curbishleys roses

Bate Heath Rose Nurseries
Aston-by-Budworth
Tel: 01565 733286

Superb range of roses always available. Wide range of rhododendrons, azaleas, conifers, acers, clematis & many more shrubs & climbing plants of exceptional quality and at realistic prices.