

DATES FOR YOUR DIARY

For details of Parish Church events, please see page 10

NOVEMBER

Monday 5th: Parish Hall, 7.30pm. Parish Council meeting. All welcome

Wednesday 7th: Parish Hall, 7.30pm. WI AGM and Hotpot Supper

Thursday 8th: Parish Hall, 7.30pm. Friends of Gt. Budworth Church Quiz.

Sunday 11th: Parish Hall, 12 noon. Wakes Lunch.

Tuesday 13th: Parish Hall, ???. WI Walk

Tuesday 13th: Parish Hall, 7.45pm. Garden Club meeting.

Thursday 15th: The Red Lion, Pickmere, 12.30pm. Ladies' lunch.

Tuesday 20th: **COPY DEADLINE FOR DECEMBER-JANUARY BUDWORTH BULLETIN**

Thursday 29th: The Venue, Gadbrook Park, 2-8pm. HS2 Public Consultation

Friday 30th: High Legh Village Hall, 2-8pm. HS2 Public Consultation

DECEMBER

Tuesday 4th: Parish Hall, 7.30pm. Garden Club Christmas Party.

Wednesday 5th: Parish Hall, 7.30pm. WI meeting: Bake-off star Diane Beard



**A magical evening is planned for
New Year's Eve in the Parish Hall**

**A home-cooked meal will be provided and
a brilliant magician will entertain us -
all for the modest sum of £30!**

**Get your names down early as numbers are
limited to 40! Contact Jenny (891431) or
Hazel (891908) to book your place.**



The Budworth Bulletin is printed by **Rankin Graphics**

Phone 01606 42808 or 0161 926 9680

Reprographics - PrePress Services - Printing Plates - Digital Print

BULLETIN COMMITTEE

Jenny Bowman
Anna Lee

891431 ----- jenny@fagitta.plus.com
892352 ----- annalee1@btinternet.com

BUDWORTH BULLETIN

November 2018

The Friends of Great Budworth Church present a

Quiz night

at

Great Budworth Parish Hall

Thursday 8th November

7.30pm

Admission £10/person

(to include light refreshments and a drink)

Teams of no more than SIX

**If you haven't got a team, do still come along - we will find
you one to join.**

For further information contact:

Geoff Ridgway (01565 733494)

MOBILE DISASTER AREA

There are a lot of very frustrated owners of mobile phones in Westage Lane, School Lane, Budworth Heath and George's Lane.



Over the past month I have spoken to 24 people in these areas, of whom only four were satisfied with their mobile phone signal. 90% of Westage Lane households were involved in the survey.

All four who are satisfied with their service have a signal booster provided by their signal provider - depending on the company, this may be provided free or cost £50.

Comments from the others surveyed range from "rubbish, dreadful, texts only sometimes" to the unrepeatable! As a result, some just keep the phone in the car. Given the many 'senior citizens' in the village, having access to a working mobile phone could sometimes be crucial. And at least one person is trying to run a business from home.

I plan to raise the issue at the next Parish Council Meeting on 5th November to try to enlist the help of our local Councillors and CW&C Council. Why not come along too and join in the discussion about this?

Jenny Bowman



CHRISTMAS WREATH WORKSHOPS

AT GUIDE POST FARM, CANN LANE, CW9 6 LX

Come and have a luxurious, creative and relaxing time where I'll demonstrate lots of ideas for Christmas decorating—then you'll make your own Christmas door wreath.

Dates (all in December)

**Saturday 1st, Sunday 2nd, Monday 3rd, Tuesday 4th, Thursday 6th,
Friday 7th, Saturday 8th.**

9.30am - 12.30pm

£30 (includes tea/coffee, cakes & mince pies)

To book your place, ring Maggie on 01565 777262 or (mob) 07970 927161

PS: Wrap up warm ... you'll be in a barn !!!

GREAT BUDWORTH PARISH COUNCIL

VACANCY

PART-TIME CLERK/RESPONSIBLE FINANCIAL OFFICER (RFO)

Great Budworth Parish Council is looking for a part-time Parish Clerk/RFO to work an average of six hours per week, including attending evening meetings as required.

The successful candidate will work from home, using a computer provided by the Parish, and their own telephone, and will be the public's primary point of contact with the Parish Council. They will carry out tasks as allocated by the Parish Council and maintain the council's accounts. Preferably, s/he will have previous experience in a local government or similar role, but full training can be given. The Parish Council meets on a bi-monthly basis on a Monday evening



One of the Parish Council's major tasks is to maintain and protect the high quality of the village environment which draws many visitors. Great Budworth has a comprehensive Parish Plan, aspires to be a high quality council and has a clear vision of its strategic direction. Great Budworth Parish has 297 electors and eight councillors. For the 2018/19 financial year a precept of £9,654 was set.

Salary will be dependent on experience but will be in line with national pay scales.

For an informal chat about the vacancy or to request a job description please contact Anna Lee (Parish Councillor) at email annalee1@btinternet.com.

To apply please send your CV with a covering letter highlighting your relevant qualifications, skills and experience to Robert Collier (Vice Chairman) at email bobcol_98@yahoo.com or 4 Westage Lane, Great Budworth, Northwich, CW9 6HJ

The closing date for receipt of applications is 16th November 2018.

Interviews will be held on Saturday 24th November 2018.



... and welcome back to ...

John Gill, who has returned to live in Great Budworth after an absence of seven years. In the meantime, John has been living in Anglesey and, latterly, Altrincham. John has moved back into his old home in The Mount and says "It's great to be back in my old stomping ground and to meet up with old friends. I look forward to catching up with everyone!"

Tiempo de Fiesta en Great Budworth!

Yes, it was time to celebrate Spanish-style in Great Budworth on Saturday 18th October - and the Big Boys managed to set the scene in style, with flamenco guitarist, flamenco-dancing senoras (who looked strangely familiar ...) and some scrumptious Spanish-style food and drink.

A crowded hall enjoyed the food, the fun and the games. Thanks go to the Big Boys for organising such a spectacular evening (and the unsung backroom girls - with special thanks going to Mrs. Hiett, who spent most of the day peeling and dicing a ton of spuds for the patatas bravas!).



*Flamenco-dancing senoras, from l. to r.
Sue Ritchie, Rebecca Milner, Jean
Davies and Karen Hammond.*



A full house enjoys the food and entertainment



*The Big Boys
team, from l. to. r.
Geoff Clewes,
Don Hammond,
Malcolm
Torrance,
Richard Elias,
Keith Brudenell,
Iain Ritchie,
Dave Buckley,
Dave Hiett*



Mib Byram took the chair at the October meeting when two speakers representing Manchester's 'Blood Bikes' told members of their work.

This is a free courier service serving all NHS Trusts across the Greater Manchester region. They transport blood, plasma, platelets, samples, medication, files and scans, donor breast milk and much more. They also support the Christie

and St Ann's Hospice. They are a charity and through fundraising they now have five Honda motorcycles which operate in the evening and through the night. All help is voluntary and they explained what happens once a call comes through and how much money this service saves the NHS.

In addition to their fee, WI members held a raffle and donated all the proceeds to the Blood Bikes.

The WI decided to commemorate the 100 years of WI by presenting the Parish Hall with a new portrait of the Queen. It was greatly admired by members and we hope that it will be enjoyed for years to come.

Helen Carey has retired as a WI adviser after many years of faithful service. She has been a worthy member and supporter of the Vale Royal group.

The AGM will take place next month in the Parish Hall on Wednesday 7th November at 7.30pm. The financial report will be presented and will be followed by a Hotpot supper.

An advance announcement for the meeting on 5th December when we have a speaker who was a contestant on the Great British Bake Off. She starred with Mary Berry, Sue, Mel and Paul H. Her name is Diane Beard and she is from Shropshire. This is a special evening and tickets for non-members will be on sale at £5 each.

The book club are reading "Let it Go" by Dame Stephanie Shirley. The ramblers enjoyed a walk around Helsby and Alvanley with lunch at the White Lion.

June Wilkinson tel. 891534



A very big welcome to ...

... Christine Wyllie, who has finally moved into 29 Westage Lane. Christine is known to many of us as she and her late husband, Jim, moved into the Old School House on Budworth Heath in the late 1960s and brought up their two daughters there. Christine was Parish Clerk and a keen tennis player for many years. Nowadays she's a keen golfer and bridge player.

It's great to have her in the bosom of the village again and we hope she will enjoy her new neighbourhood.

BROCKS-IT !!

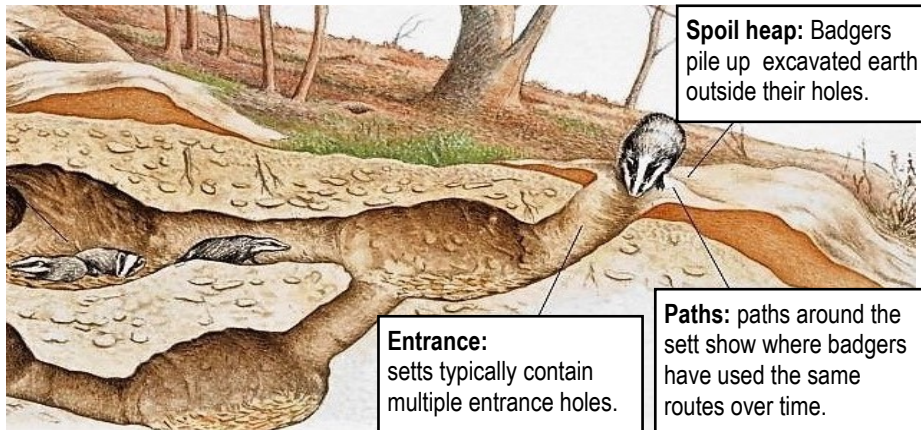
Timely action at last! On Tuesday 16th October a team of ecologists from Bollington were at work in Westage Lane installing gates on the entries to the badgers' setts. Cheshire East have received a licence from Natural England to proceed with this work, which will allow the badgers to leave their homes, but not re-enter.

A scan of 'Badger Lane' had shown that it has many tunnels under the road.

The ecologists said there were still a few badgers in residence but, having done a large-scale survey of setts in the area, were confident the badgers would find new homes. Ecologists will continue to monitor the badgers while they resetttle.

As reported in the last Bulletin, the tunnels will then need to be destroyed before a start is made on rebuilding the road ... that is if Cheshire East manage to raise the funds for the work. The saga is not over yet!

If and when the road is re-opened to traffic, those who have taken to using it as a foot-path may want to lobby for a path to be built on the south side of the hedge.



'CAT TO SUPPORT' CLEANING CO.

DOMESTIC RESCUE

CLEANING, IRONING, SHOPPING

Wherever possible, I use **METHOD** environmentally friendly, biodegradable cleaning products.

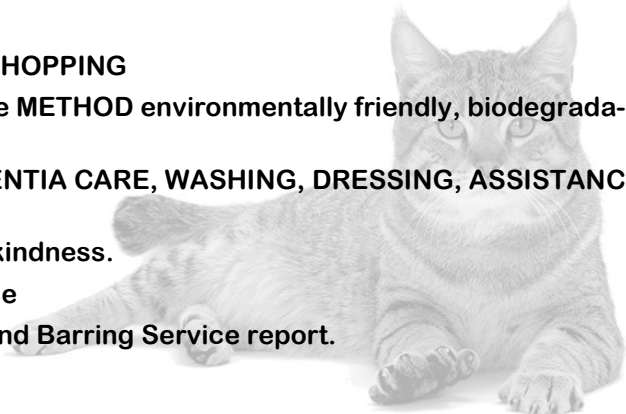
EXPERIENCED IN DEMENTIA CARE, WASHING, DRESSING, ASSISTANCE AT MEALTIMES.

Dignity preserved with kindness.

Public Liability Insurance

Up-to-date Disclosure and Barring Service report.

From £10 per hour.



SCHOOL NEWS

This term we have some fantastic opportunities for villagers to support our Friends of the School (FotS) who raise money to ensure all our pupils can access enhanced curriculum opportunities. First, if you are shopping in ASDA, make sure the cashier gives you a green token to put in the slot for Great Budworth. If our school collects the most tokens, we will receive £500 for school funds!



Secondly, our first 100+Club draw will take place on 26th October – thank you to all who have already signed up to this. If you missed out this year, make sure you keep an eye out at the start of the next school year.

Thirdly, if you have any clothes that you are clearing out, we will be collecting them soon to raise money for the school – ask at the school office for a collection bag and more details.

Thank you to everyone in the village for supporting our Friends of the School – and keep Saturday the 8th December free in your diary for our school Christmas Fair!



Maggie's flowers

A full florist service for all occasions on your doorstep.
Fresh flowers a speciality. Some varieties grown on the farm – cut fresh to order.
Please ring or email –
maggie@maggieearl.co.uk
07970 927 161
or
01565 777262

PADDY PAWS HOME-BOARDING DOG DAY CARE

We look after all your dog's needs. Dogs live in the comfort of our home and are taken for walks in the countryside whilst you're away on holiday or at work.



Call Judy/Anna on 01606 891536
07719 576128
Hilltop Farm, Aston-by-Budworth,
CW9 6NG
Licensed, fully insured & DBS checked

Are you among the more than 30 people who've joined the new Great Budworth WhatsApp group launched last month? If not, why not think about joining? And just to be clear, the group is open to anyone who has the Budworth Bulletin delivered, so it's not confined simply to those who live within the actual village of Great Budworth!



It's already proved to be a very convenient, fast and useful communication medium. For example:

- ◆ A couple of villagers have (separately) received details of several tradesmen, after asking for recommendations;
- ◆ A lost delivery man was guided to the correct address when a group member posted a query on his behalf;
- ◆ And another group member posted a query asking for a phone number whilst she was out and about, with no access to her address book!

Joining is easy: just download the WhatsApp app (if you don't already have it) and then email or text Lesley Hopkinson, the group's administrator, (lesley@hoppyhome.co.uk ; 07976 128006) to ask to join.

The Great Budworth Dining Club

Did you know that we run a dining club in the village?

We prepare a rota three times a year, when members' names are drawn randomly together to dine with other members. There are three courses, and three couples, who alternate with starters, main courses and desserts. The hosts provide the main course, and couples can be a lady and a gentleman, two gentlemen or two ladies - to suit individuals, and all couples bring a bottle of wine. It doesn't have to be gourmet, just good home-cooked food to enjoy with friends in and around the village.

This is ideal for meeting new people and catching up with old friends on an easy basis. The next rota will be out in January for the following three months. If you're interested, do please contact us, and we will send you more details.

Jean and Peter Davies



LADIES' LUNCH

November's lunch is on Thursday 15th at 12.30pm at the Red Lion,
Pickmere: Newcomers are always welcome. Contact Hazel on (01606) 891908 for further information.



GARDEN CLUB

As we approach the 'seasons of mists and mellow fruitfulness' our gardens change colour and although there are still many autumn flowers to enjoy, we must be thinking about 'putting it all to bed' for winter.

The speaker at our last meeting was Sue Beesley (pictured) from Bluebell Cottage Nurseries. Sue is well known in garden circles, and wins many accolades at the flower shows. She told us that plants say 'don't chop me down!' as they still give lots of structure to the garden and look lovely covered in frost, as well as feeding the birds with their seed heads. We are all considering how we can apply her advice to our own needs. She was warmly thanked by Sarah Lawson.



The first payment for next year's holiday to West Wales was due - and it certainly looks a full coach with great venues. For any information about this, contact Henri and Lynda Giller on 01565 777160.

Our members' Christmas party is on Tuesday 4th December. Tickets are selling well, so please contact Jane Fairclough 01606 891131 if you haven't got yours yet.

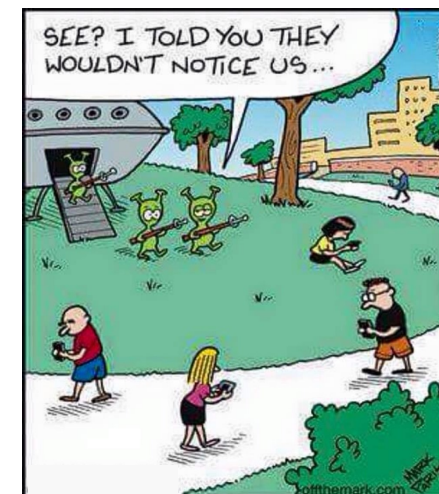
The next meeting is on Tuesday 13th November at the parish hall, when Simon Jones will talk about Bonsai, from seed to maturity. This is a subject about which we've never had a talk before and intrigues us all.

For any other information about the club or events, please contact me, or look at our website.

Jean Davies. - 01606 892383

Antrobus Executive Travel

Private Hire
 4-seater vehicle
 Local or distance
 01606 891 692 (office)
 07710 211 364 (mobile)
 alan@aetravel.co.uk
 Pre-bookings only





Great Budworth Voices (The Community Choir)

The choir will be reassembling this Christmas, led again by Ian Chesworth. The aim is to sing at the carol services at Arley Chapel on Sunday 16th December and at Great Budworth Church on Sunday 23rd December. All voices are welcome to join us. Details of rehearsal times will shortly be

posted at the back of church and on the church's website. If you are interested, please add your name to the list at the back of church.

Church Teas 2018

Teas finished on 7th October. Thank you again to everybody who helped throughout the year, in whatever way. We raised **£3700** before costs, which is an increase on last year.

On behalf of the Rev Alec Brown and the Parochial Church Council, THANK YOU.

Margaret & Maggie



The Cock @ Budworth
Warrington Rd, Great Budworth, CW9 6HB
01606 891287

Michelle and the team wish you a warm welcome to The Cock @ Budworth. We are very proud to offer a fantastic range of award winning Joseph Holt lagers and real ales, as well as a delicious home cooked menu. Mondays are 2-for-1 on our main courses all day (excluding grills), and Thursday is steak night: 2 steaks and a bottle of house wine from £35. In our restaurant we can cater for any occasion: christenings, anniversaries, baby showers, birthday celebrations, or funerals.

To enquire about reserving our restaurant for a function or to book a table please ring 01606 891287. Our team will be pleased to help you.

WORKPLACE MINISTRY

I am very much looking forward to leading two special services in St Mary and All Saints in the coming months, with the theme of the workplace. As many of you know, I am in my third year of training to be a Minister in Secular Employment (MSE). This is a particular category of minister who feels specifically called to ministry in the workplace and, although also attached to a parish, in my case Great Budworth, my calling is very much in the secular world.

Of course, we could debate about the somewhat artificial separation of the secular and sacred worlds. Indeed, for ministers in secular employment we see God in all people and in all workplaces and situations arising therein and this element of discipleship during the week (and not just on Sundays) is important to all of us in our daily lives.

As part of linking our faithful lives to workplaces I will be dedicating part of our church noticeboards to reflect my 'workplace parish' and the prayers needed by that place and would also encourage anyone to add prayers for their own workplaces. At the **Sunday Service at 10.30am on 18th November** we will be having a special 'This Time Tomorrow' slot where instead of a sermon there will be an informal interview with someone in our congregation or outside to tell us how their faith impacts on their daily lives, Monday to Friday, or perhaps particular challenges they face in the workplace as a Christian.

Our first interviewee will be our lovely curate, Christina, who works as a classroom assistant during the week. Other future speakers we hope to have are a chaplain, a doctor who is an MSE, and a judge.

I also understand how difficult it is to attend services when working all week, and to address this I am also setting up a quarterly short evening service in the style of a Meditative and Reflective Service - a place of peace away from the hustle and bustle of our daily lives and an opportunity to reflect on our working lives.

The first service will take place on **Thursday at 7.30pm on 3rd January in the Lady Chapel** and will be a great opportunity to think about renewing our discipleship, or, indeed, to explore what discipleship means in our daily lives, as 2019 begins.

I am always happy to discuss faith matters at the bar of the George and Dragon (!) and look forward to exploring these themes in the coming months.

Dr Jenny McKay
Ordinand
St Mary and All Saints.
Mckayjenny56@gmail.com



CHURCH NEWS

Diary Dates (all events take place in the parish church, unless otherwise stated):

NOVEMBER

Thursday 1st: Celtic Evening Prayer 7.30pm

Sunday 4th: Service of Commemoration 4.00pm

(List at back of church if you wish a loved one to be remembered at the service).

Wednesday 7th: Holy Communion, followed by coffee and chat 10.30am

Thursday 8th: Play and Praise 2.00pm

Thursday 8th: Friends' Quiz Night 7.30pm (see front cover for details)

Sunday 11th: Remembrance Sunday, 100 years since end of WWI

Sunday 11th: Parish Hall, 12 noon. Wakes Lunch (see p7 for details)

Thursday 25th: Play and Praise 2.00pm

DECEMBER

Sunday 2nd: Toy Service 10.30am



D & P M SHELDON

Whitehouse Dairy

Your Local Dairyman & Newsagent

- ♦ We sell other local goods: eggs, potatoes, fruit and veg.
- ♦ We use fresh milk from Booths Hall Farm, Knutsford
- ♦ We operate a 'milkwatch' scheme, keeping our eyes & ears open in the early hours

Tel: 01565 634509

www.sheldonsdairy.co.uk



Dog Walking



If you are located in the Great Budworth area and looking for a local, caring dog walker, I am available for daily walks, toilet/feeding

and general care and attention visits. For your dog's individual needs/requirements, please give me a call.

Emma: tel 01606 891 229;
07704 074 979

WE DID IT FOR MACMILLAN!

Our coffee morning in the Parish Hall

RAISED A WONDERFUL

£501. 50p

TO HELP MAKE SURE NO ONE FACES CANCER ALONE.

Thanks a million to everyone who gave - time, cakes, bric-a-brac and cash! This is a generous parish.



14/00000099

Macmillan Cancer Support, registered charity in England and Wales (241017), Scotland (SC33992), and the Isle of Man (504). Printed using sustainable materials. Please recycle. C10

Wakes Lunch

Sunday 11th November

12 noon

Parish Hall

£10/ticket (Hotpot, pudding and a drink)

Contact: Shirley Humphreys 01606 891204

or Margaret Cross 07732324001



MC

10, Bramhalls Park,
Anderton, Northwich
Cheshire, CW9 6AH

**CHAUFFEUR
TAXI SERVICES**

AIRPORT TRANSFERS - PRIVATE HIRE
PROFESSIONAL AND RELIABLE
Call Michael Green on
T: 01606 781467 M: 07784 217640

curbishleys roses

**Bate Heath Rose Nurseries
Aston-by-Budworth
Tel: 01565 733286**

Superb range of roses always available. Wide range of rhododendrons, azaleas, conifers, acers, clematis & many more shrubs & climbing plants of exceptional quality and at realistic prices.

NOVEMBER SKYWATCH

The planet Venus becomes a 'morning star' again in November, rising before the Sun on the 15th, low in the south-east around 6.30am; by the end of the month it will very bright and higher in the sky at 7am.

Mars is also still visible in the evening and will be close to the Moon in the south west at 7pm on the nights of 15th/16th November.

This is a good month to look for meteor showers, the Taurids have two components that appear in the east on 5/6th and 12/13th at about 10pm and onwards through the night. The more prolific Leonids are active from 15-20th with the maximum on the night of 17/18th after midnight, towards the eastern horizon and rising higher into the south-east by 4am on the 18th. These are faster moving than the Taurids and often leave ionisation trails.

Hoping for clear skies.

Tony Flynn



JNS Facilities Limited provide a quality service to the highest standard in the most economic, efficient and effective way. Clear cost savings for repeat business will always be implemented.

- All your building and decorating needs catered for.
- SkyVac gutter clearances from £50, essential at this time of year.

Other services include:

- Ground maintenance and tree surgery
- K Pole window cleaning
- Internal high level cleans with the use of the innovative skyVac, perfect for offices and retail outlets.

Please go to our website to see our full range of services - jnsfacilities.co.uk

Contact Phil on 07931434698 or email info@jnsfacilities.co.uk

PUBLIC CONSULTATION ABOUT HS2 IN CHESHIRE

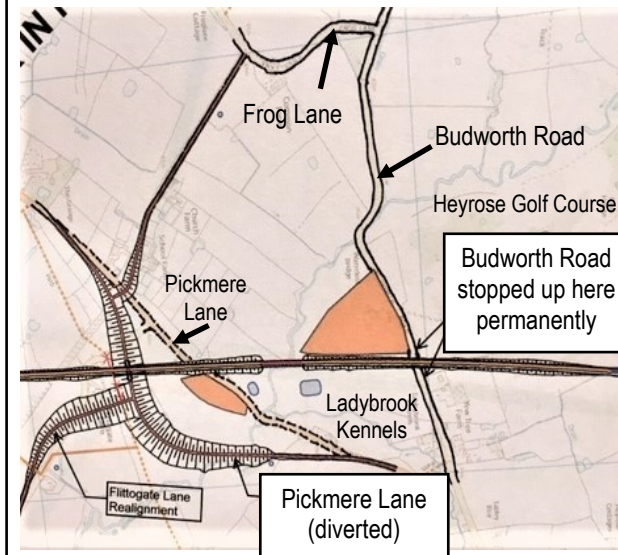
Budworth Rd. to close permanently near to Heyrose Golf Course

Further detailed plans for the route through Cheshire have been issued and the public are invited to comment about environmental concerns.



Phase 2b from Crewe to Manchester will involve the demolition of 1,000 homes and businesses, will go through 12 Sites of Special Scientific Interest and 19 ancient woodlands - and will cross a salt plain, which is known for its risk of severe subsidence.

The public is invited to discuss the potential effects of the plans with staff from HS2 at these venues:



- The Venue, Gadbrook Park, 2-8 pm, 29th November
- High Legh Village Hall, West Lane, 2-8 pm, 30th November

The consultation period closes on 21st December.

The diagram (left) shows the point at which Budworth Road will be permanently blocked. Pickmere Lane (diverted) illustrates the extensive detour (via Frog Lane) we shall all have to take as a result!

The dotted line shows the existing route of Pickmere Lane.

Need a solicitor? Then go local!

Based in Northwich town centre and established for over 20 years, Susan Howarth & Co. Solicitors, specialise in Family Law (including Family Mediation), Child Care, Residential Property, Wills & Probate (including Care of the Elderly) and Personal Injury.

We're proud to be listed in the Legal 500 Directory and to be Lexcel-accredited in recognition of our high standards of practice management and client care.

We offer 6 FREE legal drop-in clinics every week or a FREE 30 minute consultation.

At Susan Howarth & Co., we're here to help.

Address: 41 Chesterway, Northwich, Cheshire, CW9 5JE

Tel: 01606 48777 | **Website:** www.susanhwarthsolicitors.co.uk

