

DATES FOR YOUR DIARY

For details of Parish Church services, please see page 13

MAY

Wednesday 2nd: Parish Hall, 7.30pm. WI Meeting

Saturday 5th: Budworth Mere. Budworth Sailing Club open day

Monday 7th: All Fours Farm, 10.00-4.00pm. NGS Open Garden

Tuesday 8th: Parish Hall, 7.45pm. Garden Club meeting

Tuesday 8th: Bakery Cottage, High Street 10.30am—4.00pm. Clothing sale

Wednesday 9th: Parish Hall, 7.45. Garden Club meeting

Monday 14th: Parish Hall, 7.00pm. Parish Council Annual Meeting, followed at 7.30pm by the regular Parish Council meeting. All welcome.

Thursday 17th: Red Lion, Pickmere , 12.30pm. Ladies' lunch

Thursday 17th: Parish Hall, 7.30pm. RTA event: 'Ensonglopedia'

Saturday - Sunday 19th-20th: Showground, Tabley , 8.00am— 6.00pm. Royal Cheshire Show

Friday 25th: School field, 1.30pm. School Maypole afternoon

Saturday - Monday 26th-28th: Bilston Community Archaeology visiting the village

Monday 28th: All Fours Farm, 10.00-4.00pm. NGS Open Garden

Monday 28th: Parish Hall, 2.00-5.00pm. WI Village teas/cakes and plant sale

JUNE

Saturday Sunday 2nd & 3rd: The Old Parsonage, Arley Green. NGS Open Garden



All Fours Farm, Colliers Lane, Aston by Budworth, CW9 6NF

Monday 7th May 10.00 - 4.00pm & Monday 28th May 10.00 - 4.00pm

Entrance £5; Children: free

A traditional and well-established country garden with a wide range of roses, hardy shrubs, bulbs, perennials and annuals, as well as a small vegetable garden, a pond and greenhouses.

The Old Parsonage, Arley Green, CW9 6LZ

Saturday and Sunday 2nd and 3rd June 2018, 2-5.30pm

Entrance £5; Children: free

A 2-acre garden in an attractive and secretive rural setting, with ancient yew hedges, roses and herbaceous plants. Also: a woodland area with some unusual trees and shrubs; a pond, rhododendrons, azaleas, meconopsis and cardiocrinum. Wheelchair access over mown grass.

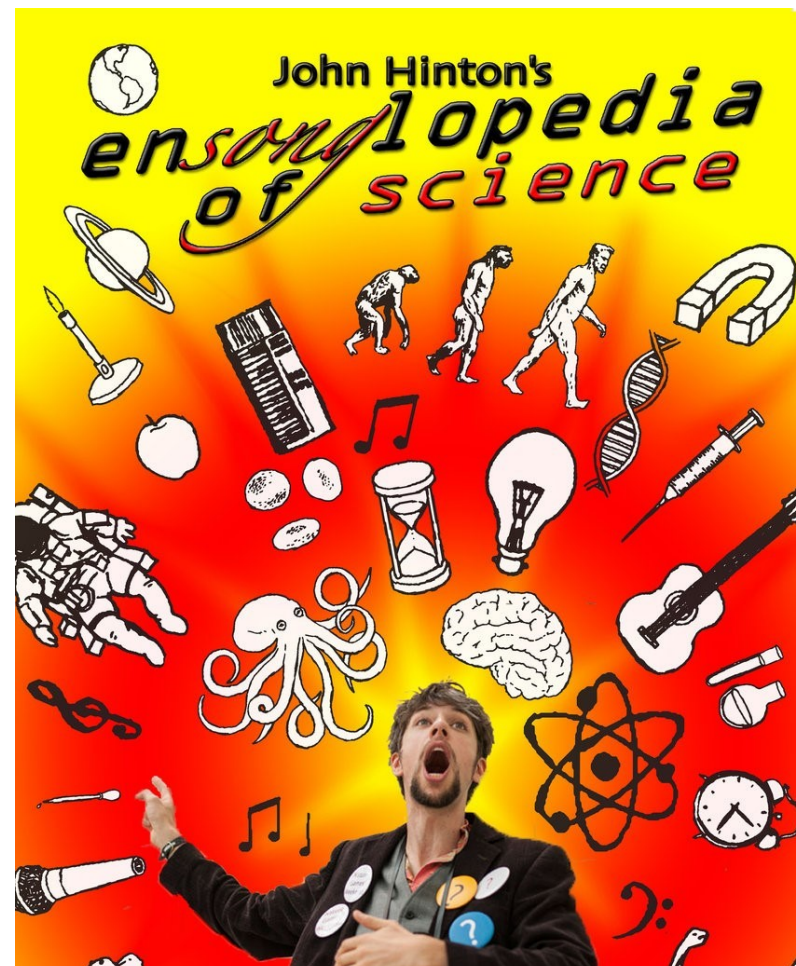
BULLETIN COMMITTEE

Jenny Bowman	891431	-----	jenny@fagitta.plus.com
Lesley Hopkinson	891391	-----	lesley@hopypyhome.co.uk
Anna Lee	892352	-----	annalee1@btinternet.com

BUDWORTH BULLETIN

May 2018

May 2018



THURSDAY 17TH MAY AT 7.30PM
IN THE PARISH HALL
(Turn to page 15 for more details)



Garden birds and the bird count were the subject of a talk by Norman Sadler (pictured), at the meeting in April. We had a good crowd of members and visitors, who will continue to feed and encourage the birds into their gardens. One fact shared was that starlings are in decline, although we get plenty around the village murmuring and squawking to each other! We had lots of tips to encourage wildlife, including butterflies and hedgehogs, into our gardens.

The WI are still amazed at the results of the Jumble Sale. It was the very best one we have ever had. Thanks again for all the help and all the jumble.

We have to vote on a Resolution for 2018 at the May meeting. The resolution is to stress the difference between mental health and physical health and to make it more acceptable to talk publicly about mental health and to lobby the government for better support for mental illness. This will be followed by a talk by Jane Robbins (not Great Budworth's Jane Robbins) about her life as a portrait sculptor. So, if you require a bust in bronze then Jane might be the person you are looking for. The venue is Great Budworth Parish Hall on Wed 2nd May and the meeting starts at 7.30pm.

Teas will be by Ros and Sue and the competition is for a jam jar of wild flowers. On May Bank Holiday, Monday 28th May, the WI are doing the village teas and selling plants, so cuttings and surplus seedlings will be gratefully received for our funds.

The walking group were hampered by wet weather again, but after a restorative coffee we set off to Moore Nature Park and enjoyed a shorter walk, followed by lunch at the Walton Arms.

June Wilkinson tel. 891534



Christian Aid Week (13th—20th May)

You should receive an envelope on behalf of Christian Aid with this Bulletin. If so, I hope you will consider making a donation. Envelopes can be dropped off at The Vicarage if no-one calls to collect them. Thank you.

Rev'd Alec Brown

Need a solicitor? Then go local!

Based in Northwich town centre and established for over 20 years, Susan Howarth & Co. Solicitors, specialise in Family Law (including Family Mediation), Child Care, Residential Property, Wills & Probate (including Care of the Elderly) and Personal Injury.

We're proud to be listed in the Legal 500 Directory and to be Lexcel-accredited in recognition of our high standards of practice management and client care.

We offer 6 FREE legal drop-in clinics every week or a FREE 30 minute consultation.

At Susan Howarth & Co., we're here to help.

Address: 41 Chesterway, Northwich, Cheshire, CW9 5JE

Tel: 01606 48777 | **Website:** www.susanhwarthsolicitors.co.uk



Ensonglopedia of Science

Rural Touring Arts presentation
Parish Hall

Thursday 17th May at 7.30pm

A fast paced, hugely entertaining and utterly enlightening evening, bound to captivate anyone from 7 to 107 with a passing interest in our universe. A song about science for each letter of the alphabet: black holes, cells, DNA ... and much, much more.

Entertaining at many levels and ideal for a family night out. Don't miss it!

Tickets: Adult £10, Student £8, Children £5.

Contact: Jan 01606 891019 or Lynda 01606 891571

"Something close to brilliance" Libby Purves, The Times.



CHESHIRE SHOW

Advance tickets for the Cheshire Show can be bought from the Show Office or online at the Royal Cheshire Show website (www.royalcheshireshow.org). The Cheshire showground is at Tabley, just off Pickmere Lane, and the show is on Tuesday 19th and Wednesday 20th June. We strongly recommend a visit and there are savings to be made if buying tickets in advance.

NJ Garden Maintenance

Neil Jones, local gardener with an established Great Budworth and surrounding area clientele now available for all types of garden work, from regular grass cutting to hedge maintenance and one-off garden tidy ups. Licensed to remove all your garden waste.

Friendly and reliable service, now taking bookings for this season

Large or small, give us a call.

01606 350793 or 07977 105380

PADDY PAWS HOMEBOARDING DOG DAY CARE

We look after all your dog's needs. Dogs live in the comfort of our home and are taken for walks in the countryside whilst you're away on holiday or at work.



Call Judy/Anna on 01606 891536
07719 576128

Hilltop Farm, Aston-by-Budworth, CW9 6NG
Licensed, fully insured & DBS checked



The Martians may have been and gone, but at the end of May members of the Bidston Community Archaeology Group are coming again for the May Bank Holiday weekend

of 26th to 28th May. This is the fourth time they have been to do some archaeology in our village. They will have a base and are hoping to do another four or five satellite digs in gardens (other than ones they've already dug) around the village. They are looking for gardens in the centre of the village with good access. The dig is a 3ft square patch of soil or grass. The archaeologists are very careful: previous sites have always been returned to their former glory. If you have a suitable site please contact either Alan Bailey (891149) or Jonathon Trigg (on jtrigg@liv.ac.uk or 0151 922 5096).

In previous years some villagers have helped the archaeologists and this has been enjoyed and appreciated by all involved. If you've volunteered in the past, you'd be very much welcomed again. If you haven't, please don't hesitate to volunteer!

BUDWORTH SAILING CLUB



The Club's new jetties were opened on Sunday 22nd April by the RYA North West Chairman. The Club's Open Day is on Saturday 5th May. Do come along and learn all about sailing - and admire the new jetties! For further information, please contact Lesley Anderson on 01606 891354.



St. Mary & All Saints Church, Great Budworth

Garden Party Belmont Hall

Saturday 16th June, from 2pm



QUIS QUIS CLOTHES

Once again, new Quis Quis ladies' summer clothes will be for sale from Lesley Anderson's home at Bakery Cottage, High Street, on TUESDAY 8th MAY, 10.30 until 4pm. Please come along and have a look - or just have a coffee. Profits from sales will go to Bala Children's Centre orphanage/school in Homa Bay, Kenya.

GARDEN CLUB

After a very cold and wet spring, our narcissi competition produced only nine entries, but we had an excellent winner: Linda Enderby, who our judge, Jerry Bentley, and we, considered the best. Well done Linda!



The evening began with Peter Davies having to go to the top of Heath Lane, to direct traffic to the parish hall owing to the parking problems in the village caused by the filming of BBC's 'War of the Worlds'. It's been a fantastic experience that we've all enjoyed - and which prompted many members to stroll into the village to see it as a film set.

That was not all, though: our speaker, John Woods, had had an accident and cancelled only the day before! All was not lost, however, as I managed to contact old friend, and garden guru, Sam Youd (pictured), the originator of most of Tatton Park's success in the gardening sphere.

Sam came and, despite the short notice, treated us to a wonderful evening of garden stories and advice. Everyone enjoyed his sense of humour and knowledge and he was ably

thanked by Guy Potter.

There are new data protection laws, which mean that members had to sign an agreement that we can keep their email details for use within the club.

We have ten new people to fill the retired members gap and we gave them a warm welcome.

The next meeting is on 8 May at the parish hall, when photographer Fiona Lee will talk about gardens in the north west. Plug plants will be given out, provided by Eddie Horrigan, which members are invited to grow on for the produce show in September, and a sign-up sheet for a July coach trip will be circulated.

Any information in the first instance, please contact me -

Jean Davies 01606 892383 / 0789993 7683



D & P M SHELTON

Whitehouse Dairy
Your Local Dairyman & Newsagent

- ◆ We sell other local goods: eggs, potatoes, fruit and veg.
- ◆ We use fresh milk from Booths Hall Farm, Knutsford
- ◆ We operate a 'milkwatch' scheme, keeping our eyes & ears open in the early hours

Tel: 01565 634509

www.sheldonsdairy.co.uk



Dog Walking



If you are located in the Great Budworth area and looking for a local, caring dog walker, I am available for daily walks, toilet/feeding

and general care and attention visits. For your dog's individual needs/requirements, please give me a call.

Emma: tel 01606 891 229;
07704 074 979

PARISH HALL COMMITTEE AGM



The Parish Hall Annual General Meeting was held on 11 April 2018. The existing committee was re-elected, and grateful thanks were expressed to Sue Scott for all her work as the bookings clerk.

Finances are generally healthy and it was agreed that there would be no short-term increase in the hire charges.

We are seeking quotes to provide hardstanding sandstone or granite paving outside the kitchen area which, apart from eliminating the problem of muddy ground, would enable the use of marquee extensions and improve the amount of short-term parking. It was reported that a significant, anonymous donation had been received which would make a major contribution to this project.

A working party has been established to look at the kitchen facilities to ensure that they meet current legislation and are fit for purpose. It may be appropriate to improve the flooring, cooking facilities, refrigeration and the like, together with the possible installation of a dishwasher.

The Mammoth Films project has provided £5,000 to improve the facilities of the Parish Field. It may be used for improved drainage, a refurbishment of the track or possibly selective planting of shrubs and trees.

Discussions with the Parish Council are ongoing about the appropriate form of the agreement between the Parish Hall Charity and the Parish Council.

Finally, we need to review our Safeguarding Policy and our Fire Safety Policies to ensure that they are appropriate for an organisation such as the Parish Hall.

Don Hammond, Chairman, Parish Hall Committee

SCHOOL NEWS

We are looking forward to a busy term with lots going on for all our pupils. Planning is under way for our residential trips for children in years 1 to 4, with our Reception children joining in for a whole day out with class 2.

Our Maypole afternoon this year will take place on Friday 25th May at 1.30pm. Everyone is invited to come and join in with this annual tradition. We shall also be taking the opportunity that day to have an official opening for our new school entrance. We are delighted with how the work on this is progressing and are looking forward to moving in soon.

Sat 7th July will be our Friends of the School Budfest, so please keep this date free and look out for more information in due course.

As well as sports day and our school summer production, children will be involved in lots of other special events, such as a Big Sing in Northwich and a Leavers' Service at Chester Cathedral. In between all this, we'll fit in some work, especially during SATs and assessment week!



CHURCH NEWS

Dates for the diary

Sun 6th May 10.30am Rogationtide All Age Service, with short procession around the village (weather permitting!)

Thurs 10th 7.30pm Ascension Day Holy Communion Service

Sat 12th 9.30am – 12.30pm (or thereabouts) annual Boyd Walk (in celebration of A.W. Boyd, local naturalist and writer), starting from St Mark's Church, Antrobus

Mon 14th 12noon – Thy Kingdom Come – midday prayers in Chester Cathedral, led by the Vicar

Tues 29th 7.30pm Archdeacon's Visitation Service, St Wilfrid's Church, Grappenhall

Sat 2nd June 5.00pm Ordination Service, Chester Cathedral

Annual Parochial Church Meeting

Thanks to all who attended this meeting, and to those who have been able to view the drawings in church and have made comments. I am pleased to report that both Churchwardens (Margaret Cross and Pauline Ridgway) have been re-elected for a further year. My thanks go to them, and to all those people (sidespeople, cleaners, readers, musicians, choir et al) who help to make St Mary and All Saints such a friendly and welcoming church – it does not go unnoticed – just read the comments in the Visitors' Book! The PCC will be meeting in May to discuss further the proposed enhancements to the church, and the outcome will be reported back to parishioners and worshippers.

Church Teas

If you're looking for a relaxing and enjoyable Sunday afternoon outing, with delicious homemade cake and tea or coffee, then look no further than Great Budworth Parish Hall every Sunday (and Bank Holiday) afternoon from 2pm, with a second hand bookstall as well. All proceeds to Great Budworth Parish Church.

Rev'd Alec Brown



curbishleys roses

Bate Heath Rose Nurseries
Aston-by-Budworth
Tel: 01565 733286

Superb range of roses always available. Wide range of rhododendrons, azaleas, conifers, acers, clematis & many more shrubs & climbing plants of exceptional quality and at realistic prices.

MC

10, Bramhalls Park,
Anderton, Northwich
Cheshire, CW9 6AH

**CHAUFFEUR
TAXI SERVICES**

AIRPORT TRANSFERS - PRIVATE HIRE
PROFESSIONAL AND RELIABLE
Call Michael Green on
T: 01606 781467 M: 07784 217640

The Mining Bee

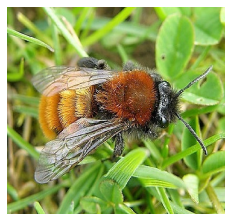
Don't be alarmed if you spot bee activity as you walk past my garden in Westage Lane! It's just the harmless mining bee going about its business.

This pretty, furry, ginger-coloured bee is common in gardens - even in city centres. Many people will have several of them nesting in their lawns each year without really knowing they're there. What they might notice, though, are the little volcano-shaped mounds that appear on the lawn in early spring. These differ from ants' nests in that they have a single hole in the top about 4mm in diameter.

As their name suggests, female Tawny mining bees dig holes in the ground to provide a safe nesting place where they can lay their eggs and the young bees can develop before emerging the following year. Unlike honey bees or most bumblebees, mining bees are solitary and females work on their own to build a nest and collect pollen for the young to feed on, but there might be many nests concentrated in a small area, giving the impression of social activity. Male Tawny mining bees are smaller and brownish. They play no part in nest building or providing for their offspring.

Tawny mining bees are totally harmless and will not sting. In fact, they are useful pollinators of garden plants, fruit trees and crops such as oilseed rape. Their nests won't damage your lawn and the little earth mounds will disappear after a couple of weeks, so there's no need to remove them or try to discourage these lovely little bees - just enjoy them and look out for some of the fascinating parasites associated with them, such as bee-flies and nomad bees.

Patricia Collings





Maggie's flowers
A full florist service for all occasions on your doorstep. Fresh flowers a speciality. Some varieties grown on the farm—cut fresh to order. Please ring or email – maggie@maggieearl.co.uk 07970 927 161 or 01565 777262

GOLDEN CONSTRUCTION

Give us a call - we'll do it all

**Builders and property
maintenance
Damp treatment
Handyman service**



**BOB DEAN
01606 891766
07814 851 366**

April has been a busy month for us all. Whilst there were no Parish Council meetings, there was plenty to do as Mammoth Productions hit town to film 'War of the Worlds', a three-part serial to be screened at Christmas time by the BBC.

Comments I have received have mentioned the disruption, but have been very appreciative of the way the crew tried to meet all queries and potential hiccups with courtesy and good humour. The technical aspects of the filming, as our village became a disaster scene, were amazing. The weather, however, could hardly have been worse! Thank you all for your forbearance and patience.

On the plus side, the Parish Council has received a generous fee of £27,500 from Mammoth. Some of this (£5,000) is ring fenced for improvements to the Parish Field and repair of the track, the parking area and drainage. The remainder will be devoted to Parish projects. **We are open to suggestions from all residents.** Please send your suggestions by email to me at hilarykeithbrudenell@btinternet.com, or put a note through my door (33 School Lane); or contact any of my fellow councillors (contact details in last month's Bulletin), over the next couple of weeks, so that the Parish Council can consider all your wishes when it meets on Monday 14th May. Please give us a summary of your favoured project with an approximate costing, wherever possible.

The Annual Parish Meeting will be held in the Parish Hall on 14 May at 7.0 pm. This will be followed by an ordinary Parish Council meeting at 7.30pm. Do join us – all are welcome.

Hilary Brudenell, Chairman



**Parish
Council News**



... to Christine Wyllie, who, after living at The Old School House at Budworth Heath for many years, will soon be moving into Westage Lane to be closer to her many friends in the village: she has bought the house previously owned by Fred and Jeanette Owen, who have departed to Timperley, where we trust they will find happiness and peace of mind.

**Apartment to rent
in
Conway area of North Wales**
Two bedroomed apartment – sleeps four. Amazing sea views and also overlooks the golf course. Lovely coastal and beach walks.
(01606) 891908

**Antrobus Executive
Travel**
Private Hire - 4-seater vehicle
Local or distance
01606 891 692 (office) 07710 211 364 (mobile)
alan@atetravel.co.uk
Pre-bookings only

THANK YOU

Bob and I would like to thank everyone for their good wishes on our Golden Wedding celebrations. We had a very exciting week with our family and friends, but the folk in this special village excelled themselves by arranging a superb party in our village hall. The miracle of the evening was the fact that neither Bob nor I suspected a thing! We were aware that there was something going on in the Parish Hall, but we hadn't a clue that it was in our honour until we were coaxed into the hall on the pretence of a free drink given by the film production company - and then all was revealed: 90 people lay in wait!



Bob & June at their surprise party

It was a most special night and one that we will never forget. We feel indebted to so many people who had been lying through their teeth and whispering secret messages to each other.

The faith supper* food was delicious, the company was amazing and the room looked simply stunning; particular thanks go to Sue Scott for risking her neck by standing on a ladder to deck the oak beams with an amazing display of holly interwoven with fairy lights! Thanks also to Mammoth for supplying a couple of cases of wine! Bram Taylor sang all my special songs and has promised to return to our hall with his own band and do a night for RNLI later in the year - and they even 'let' me play my two tunes on the piano, singing heartily with good British fervour.

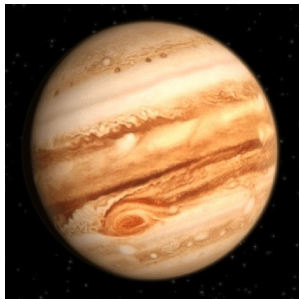
It all goes to show that Great Budworth is a special place with special people.

Many thanks, Bob & June x x

**for the benefit of those who (like your editor) don't know what a 'faith' supper is, June says it's "when everyone brings a dish and you have to have faith that there'll be enough food of different types and that there'll be enough to go round." Ed.*

SKYWATCH

The largest planet of our solar system is Jupiter, which comes into 'opposition' on 9 May when it will be about 408 million miles from Earth.



It will be very bright in the night sky for all of May, rising in the east after sunset (opposite the sun in our sky) and moving towards the south by midnight, and at this time on 27/28 May it will be close to the Moon. For early risers, Mars and Saturn are close to the Moon on 5/6 May in the south at about 4am.

Here's hoping for clear skies,
Tony Flynn

Great Budworth Cricket Club News

We are holding our Start of the Season BBQ on Saturday 2nd June from 5.00—8.00pm at The Dene House, Great Budworth. Tickets are available from Maggie Blower (01606 891213) at a cost of £10.



As always, new members are most welcome and if you are interested in playing a match then give Peter McAndrew a ring on 01606 891213.

We hope you will all be able to join us at some of this season's matches, which are as follows:

10th May at 6.00pm away at Eaton

17th May at 6.00pm Wyncote Ramblers away at Barnton

20th May at 2.00pm away at Lymm

22nd May at 6.00pm Moss Hey away at Woodford

6th June at 6.00pm away at Lymm

9th June at 2.00pm Antrobus at ARLEY

All matches this season have been sponsored by Staveley Head Limited, independent insurance brokers. The Club is most grateful for their support and generosity.



The Cock @ Budworth

Warrington Rd, Great Budworth, CW9 6HB
01606 891287

Michelle and the team wish you a warm welcome to The Cock @ Budworth. We are very proud to offer a fantastic range of award winning Joseph Holt lagers and real ales, as well as a delicious home cooked menu. Mondays are 2-for-1 on our main courses all day (excluding grills), and Thursday is steak night: 2 steaks and a bottle of house wine from £35.

In our converted restaurant we can cater for any occasion: funerals, christenings, anniversaries, baby showers or birthday celebrations.



Top left: The post-invasion set during preparation

Top right: Eleanor Tomlinson, one of the series' stars

Above left: Rafe Spall, who also stars

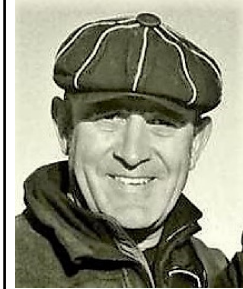


And now see Great Budworth as it really was 72 years ago ...

The link below will take you to a four-minute film clip entitled 'Quiet Village: Scenes of a Cheshire Village'. The village in question is, of course, Great Budworth! The film clip has no voiceover or background music (and is all the better for it, many would argue). Do take a look: <https://player.bfi.org.uk/free/film/watch-quiet-village-scenes-of-a-cheshire-village-1946-online>

Our thanks to Julie and Ted Parry for bringing this little gem to our attention.

THANKS A MILLION, GREAT BUDWORTH



I never thought filming such a large scale project in such a small, close-knit village as Great Budworth would ever be as straightforward as it was.

Sure, it had its problems – the wrong size cherry pickers turning up for the night scenes caused no end of grief and fortunately there was no one sitting in the passenger seat of Keiran's pride and joy [see Keiran's account on page 8] as a lorry carrying a genie boom decided to roll back down the hill and write the car off.

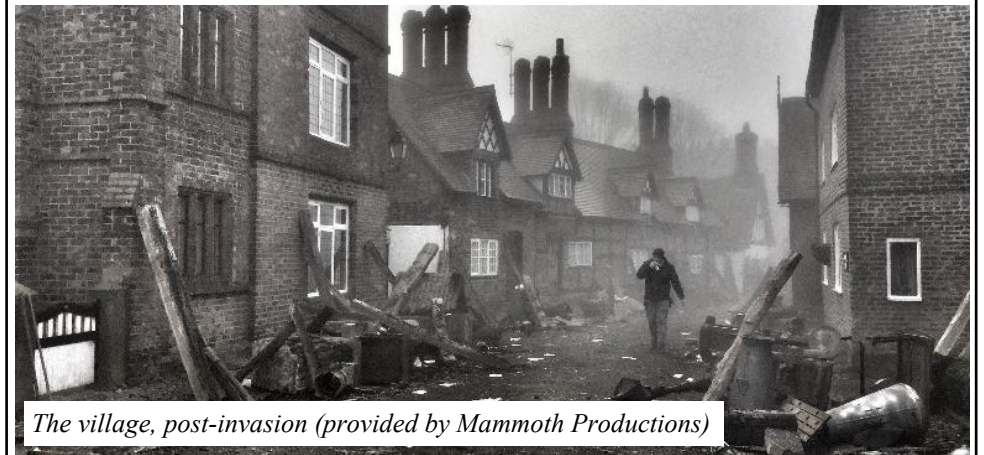
Some of you may have a very different opinion, but from my end our time in Budworth could not have gone better. As a village, you extended us a very warm and enthusiastic welcome. From the first residents' meeting right through the whole process, I felt that the village as a whole was very interested in what we were trying to achieve. What we do is not at all easy, but your co-operation, help and can-do attitude made the whole process much simpler.

I must extend particular thanks to Hilary Brudenell and all the members of the Parish Council for their help and support; to Alec Brown for the use of the church and Old School for the duration; to Dave and Rachel Wilkinson for the use of their field as our technical base; to David and Hilary Critchley, of Providence Cottage for the use of their house and garden; and to Chris and Jackie at the George and Dragon for keeping the crew going with excellent coffee.

But most of all I'd like to really thank all the residents in the village who put up with us for two weeks with good humour, and considerable patience. We couldn't have done it without your selfless co-operation and I can tell you now that the footage is fantastic. The village looks amazing.

Thank you all very, very much.

Andrew Bainbridge, Location Manager



The village, post-invasion (provided by Mammoth Productions)

THE MARTIANS HAVE LANDED – ME RIGHT IN IT!

As I left my home on Tuesday the 3rd April and drove up Southbank, I could see the High Street shrouded in mist, with several fires burning at the roadside and debris littering the street in both directions. Quite a night at the George and Dragon was my first, though totally incorrect, assumption. At the top of Southbank my progress was halted by a man wearing a hi-viz jacket with a surgically implanted mobile telephone adhering to his left ear.

“What’s happening ?” I innocently enquired.

“The Martians have landed,” he responded matter-of-factly.

“Oh, the Martians of Marsden?” I further enquired.

“No,” he said, “they’re from another planet.”

“I see. Yorkshire. Well never mind, they’ll probably go home at the end of the cricket season.” I optimistically forecast.

I continued to my office and returned at about 5.30pm. As I turned off the Warrington Road into the High Street, I was halted by another man wearing a hi-viz jacket. He was trying to divert my attention from an alien craft parked half way up the High Street, which the cunning devils had craftily disguised as a transporter unloading an unworldly large cherry-picker. He summoned assistance from his fiendish cohorts.

Within seconds they had released the demonic cherry-picker, but it then came hurtling down the hill towards me at warp speed 3. I was trapped inside a two door metal can with only a canvas roof! By now the beast was crawling all over my car. The leading probe, with one of the aliens sitting in it, hammered at the bonnet, ripped asunder the canvas roof and tore menacingly at the boot, while his accomplice in the main body of this alien craft hammered relentlessly at the front of my vehicle. Eventually, exhausted by the ferocity of the attack, they ceased their futile aggression. I stepped out of my car, unharmed: a tribute to the unsurpassed excellence of Bentley engineering. This was the turning point in the War of the Worlds. Within a matter of days the whole invading alien force was defeated and banished, not only from our village, but from our galaxy for ever.

After the initial euphoria of victory, I realized what a significant role I had played in the campaign to vanquish this alien life-force, but at what cost? My faithful Bentley, which had endured so much unprovoked injury in saving my life, was a broken wreck, a shadow of its former glory, and now languishes in some remote and forgotten scrapyard.

To relieve the depression the memory invoked, I contacted two gentlemen of illustrious repute – a Mr Rolls and his colleague Mr Royce. They said “Yes, you heroic Cinderella, you will go to the ball.” And guess what I’ve got parked in the driveway to take me to it!

Keiran Peters



WAR OF THE WORLDS – MY LIFE AS AN EXTRA



I arrived at Mammoth’s Marbury HQ at 11.45am and was quickly given a short back and sides, an Edwardian postman’s uniform to put on, and a full English breakfast. This, I thought, can’t be bad – postmen finish work early in the day, don’t they?

However, as I drove home at 11.45pm, I began to think that the glamorous world of showbiz was not all it’s cracked up to be. However, it was a fun day: I delivered letters at the top of Church Street, in the background as the stars pedalled up to Providence Cottage [several times] and then walked from there to the pub as something went on in the cottage’s garden [several times].

I was impressed by the attention to detail – wedding ring off as men didn’t wear them in those days [so they told me], even though I’m just a speck in the background. And all the professional female extras were put in corsets [so they told me] to ensure their posture was in keeping! We sat for several hours in the Green Room – a.k.a. the Old School – exchanging such intimacies! After a three-course supper the Martians were landing, so we were all muddled up and called upon to emote terror, fright, alarm, etc. whilst fleeing up Church Street [several times]. Would I do it again? Probably. I await Spielberg’s call!!

Alan Freemantle

Right: ‘Woking’ pre-invasion

Below: Three extras

