

## DATES FOR YOUR DIARY

For details of Parish Church events, please see page 9

### MARCH

**Friday 2nd (until Friday 30th):** Parish Church, 10am-4pm (Sundays 12-4pm), Art exhibition.

**Saturday 3rd:** Parish Church, 2.30pm. Talk by Beth Barlow, artist.

**Monday 5th:** Parish Hall, 7.30pm. Parish Council meeting. All welcome.

**Wednesday 7th:** Parish Hall, 7.30pm. WI meeting

**Tuesday 13th:** Parish Hall, 7.45pm. Garden Club meeting.

**Wednesday 14th:** Parish Hall, 7.30pm. Bowling Green AGM.

**Saturday 24th:** Parish Hall, 11.00am. W.I. Jumble sale.

Copy for the Budworth Bulletin should be submitted to Anna Lee no later than the 20th of the month for the following month's issue. Please either email copy to [annalee1@btinternet.com](mailto:annalee1@btinternet.com) or pop it through the letterbox (at the gate) of The Farthings, Farthing Lane (off Westage Lane).

To advertise in the Budworth Bulletin, please contact Jenny Bowman on [jenny@fagitta.plus.com](mailto:jenny@fagitta.plus.com). Anna and Jenny can also be contacted by phone on the numbers at the bottom of this page.

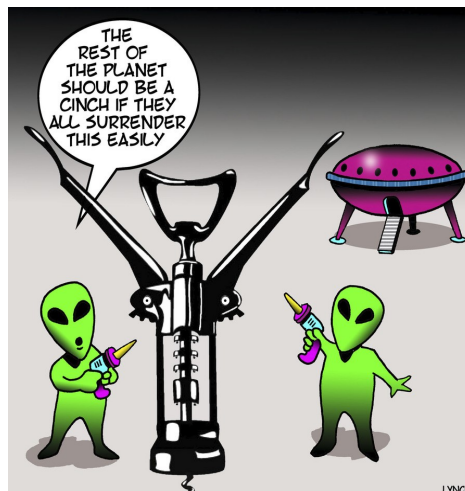


### Dog Walking

If you are located in the Great Budworth area and looking for a local, caring dog walker, I am available for daily walks,

toilet/feeding and general care and attention visits. For your dog's individual needs/requirements, please give me a call.

Emma: tel 01606 891 229;  
07704 074 979



War of the Worlds - coming soon!

### BULLETIN COMMITTEE

Jenny Bowman	891431	-----	<a href="mailto:jenny@fagitta.plus.com">jenny@fagitta.plus.com</a>
Lesley Hopkinson	891391	-----	<a href="mailto:lesley@hoppyhome.co.uk">lesley@hoppyhome.co.uk</a>
Anna Lee	892352	-----	<a href="mailto:annalee1@btinternet.com">annalee1@btinternet.com</a>

# BUDWORTH BULLETIN

March 2018

## BIG BOYS' BREAKFAST 2018



The Big Boys, from left to right: Don Hammond, Geoff Clewes, Richard Elias, David Buckley, Malcolm Torrance, Dave Hiett, Iain Ritchie, John Tours and Keith Brudenell.

Dave and Don would like to thank all the 'Big Boys' (and some industrious female elves) who worked so hard to serve some 90+ breakfasts on Sunday, 28 January. The beady-eyed will have noticed that there was even a hint of efficiency that may be sneaking into the performance after so many years of dress rehearsals.

Our grateful thanks go to Poplars Farm for the fine, free, free-range eggs, which were donated and expertly fried by our experienced executive egg chef.

After all costs we raised a tad over £700. The profits will be distributed to:

- the Friends of Great Budworth C.of E. School,
- the Budworth Bulletin,
- the Parish Hall, in the hope that an industrial, catering, washing-up machine might be installed; and as a contribution to the resurfacing of the area outside the Hall to replace the mud with some flagstones.

Looking forward, we hope to have the next Big Boys' event on Saturday 14 October in the evening in the Parish Hall, when we expect it to have a Spanish Theme. Please put the date in your diary and dig out those castanets you brought back from Barcelona.

Dave & Don

The February meeting was our 86<sup>th</sup> Birthday and Mark Byram gave us lots of photography tips for taking a good snap, especially for the photography competition at the Cheshire show later in the year, which will keep us 'focused'. Thank you to Mark for an excellent talk.

We enjoyed a birthday lunch at the Lambing Shed in Ollerton, Knutsford. This has only been open for five years and is well worth a visit.



The walking group deserve a medal for their February walk in Tatton Park. We braved rain, sleet, mud and floods - but found solace at the Stable Restaurant in the park, where we enjoyed coffee and at the Angel in Knutsford (pictured), where we enjoyed lunch. It is at times like this you realise the difference between shower-proof and rain-proof - it certainly gives your equipment a good testing!

The book club members are reading 'The Wonder', by Emma Donoghue, this month.

Our meeting in March is on Wednesday 7<sup>th</sup> March, when Angela Davies will tell us about her experience as a western woman in the Japanese world and how she got there. The competition is for something Japanese and teas will be by Sandra and Shirley.

Everyone is welcome: now is a good time to join the WI - or you can just come along as a visitor.

June Wilkinson

*curbishleys roses*

**Bate Heath Rose Nurseries**  
Aston-by-Budworth  
Tel: 01565 733286

Superb range of roses always available. Wide range of rhododendrons, azaleas, conifers, acers, clematis & many more shrubs & climbing plants of exceptional quality and at realistic prices.

**MC**

10, Bramhalls Park,  
Anderton, Northwich  
Cheshire, CW9 6AH

**CHAUFFEUR  
TAXI SERVICES**

AIRPORT TRANSFERS - PRIVATE HIRE  
PROFESSIONAL AND RELIABLE  
Call Michael Green on  
T: 01606 781467 M: 07784 217640

## NEWS FROM WASTE LAND

Six years ago, after a hotly contested planning application to CW&C, permission was granted for the erection of a Bio Energy Waste Processing plant, with a 20m high chimney, on the site of the Lostock Works. This plant has not as yet been erected but the scheme is far from dead. In the course of the last year an application has been made to increase the chimney height to 52m, although that has now been reduced to 42m.

The reason for the request to increase the height of the chimney so dramatically is that the plan is now to build a waste burning incinerator, rather than using the much cleaner Bio Energy process originally agreed. Cheshire Anti Incinerator Network (CHAIN) contend that the site owners are trying to change the scheme 'by stealth', and claim that planning rules do not allow this degree of change within an existing planning permission.

Along with our local Conservative and Labour MPs, Lach Dennis, Lostock Gralam and Pickmere Parish Councils, CHAIN is urging CW&C to demand that a totally new planning application is now submitted for the entire plant if the amended scheme is to be given consideration.



*Artist impression of what the Lostock energy  
-from-waste facility will look like*

The site owners say that the plant will provide heat and power to TATA Chemicals, but TATA has its own gas-fired power station in Winnington and intends to build another vast waste incinerator next door to the site in Lostock.

Waste incinerators normally have an operational life of at least 30 years: you have been warned!

## The Cock@Budworth



**Warrington Road, Great Budworth**  
**01606 891287**

Michelle and the team wish you a warm welcome to The Cock @ Budworth. In addition to our home-cooked Sunday roast we offer locally sourced, home-cooked specials.

We cater for christenings, anniversaries, funerals, etc. You can choose from a buffet or 2/3 course menu options. Our superb beer garden awaits the long summer days. Bring your families and enjoy the superb views.



**D & P M SHELDON**  
**Whitehouse Dairy**  
*Your Local Dairyman & Newsagent*

- ♦ We sell other local goods: eggs, potatoes, fruit and veg.
- ♦ We use fresh milk from Booths Hall Farm, Knutsford
- ♦ We operate a 'milkwatch' scheme, keeping our eyes & ears open in the early hours

Tel: 01565 634509

[www.sheldondairy.co.uk](http://www.sheldondairy.co.uk)

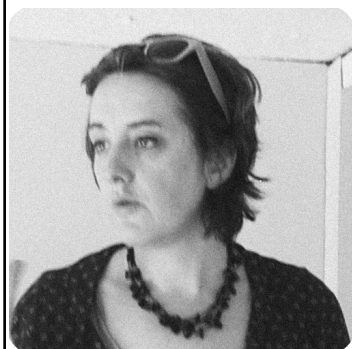


## Art Exhibition in the Parish Church

This year at Great Budworth Church we are hosting two exhibitions by Northwich Artist, Beth Barlow (pictured). All are invited to the first exhibition.

The title is "You're always safe when you shop on Ebay."

**2<sup>nd</sup> – 30<sup>th</sup> March 2018.**



Originally from Manchester, Beth moved to Cheshire when studying for a degree at Chester University. She describes herself as a conceptual artist; the ideas coming first and the medium coming second. Beth studied for an MA in fine art with the key question "Can art be useful?" Continuing this theme, she works with groups of people as a Socially Engaged artist where she uses art to explore issues and facilitate change. Her work has taken her to some of the most deprived areas of the country to explore ideas around regeneration, giving, sharing and moods.

Beth writes of the exhibition:-

*You're Always Safe When You Shop on E Bay* looks at those we trust in a secular world. Brought up Catholic and now agnostic, I have struggled with the idea of faith in a deity: when we decide not to put our faith in religious ideas, what fills the gap? Where do we go for our sense of security? Brands and the big business behind them might be said to exploit our insecurity in a changing and less traditional world. Sometimes we come to trust certain providers or brands. When asked why they like a certain brand of trainer, a person may say because they trust them. As I started to explore these ideas I came across Ebay's slogan 'You're always safe when you shop on Ebay'. I decided to make a series of personal altars or shrines. Each one explores a different meditation."

There will be a private viewing on the 2<sup>nd</sup> March from 4pm – 7pm with drinks and light refreshments. If you would like to attend please email [ckdjwestwell@tiscali.co.uk](mailto:ckdjwestwell@tiscali.co.uk).

On Saturday 3<sup>rd</sup> March Beth will be giving an artist's talk at 2.30pm in church where she will talk about the installation and answer any questions. Again, there will be refreshments.

The exhibition and events are free.

Then the exhibition will stay in church until Good Friday. The church is open daily from 10am-4pm. On a Sunday it will be open from 12noon - 4pm (closed Saturday 17<sup>th</sup> March 1-2.30pm and Thursday 29<sup>th</sup> March from 1-3pm)

If you have any questions please do not hesitate to contact us at [ckdjwestwell@tiscali.co.uk](mailto:ckdjwestwell@tiscali.co.uk) or on 01606 782 743

## GARDEN CLUB

The garden club continues its popularity and success.

The February AGM passed without incident, and all reports by the chair, secretary and treasurer were successfully given. This year we have had some resignations for almost the first time, from members who have supported us over the last 18 years, and now wish to be just occasional guests. I thanked them

for the wonderful contributions that they have made to our club.

Two very important members of the committee, Richard Fenby, almost a founder member and editor of our Newsletter, and Jerry Bentley, (pictured, left, with me) credited with success of our produce show, have resigned after many years, because of other commitments.



They were both thanked and presented

with garden vouchers. Richard was also given a life membership.

Most of the subscriptions were paid. The cut-off date for paying any remaining subscriptions is the March meeting, after which members from the waiting list will be invited to take up available spaces.

The evening concluded with an excellent talk by Stella Exley, of Hare Spring Cottage Plants in York. Her vivacious personality and enthusiasm were evident as she gave us an illustrated talk about her experience of growing her speciality Camassias for Chris Beardshaw's Chelsea garden, which won a gold medal. Stella is pictured, below, with Chris Beardshaw. Her talk formed a great start to our new year and Stella was complimented and thanked by Eddie Horrigan.

The next meeting is on Tuesday 13<sup>th</sup> March at the Parish Hall at 7.45, when broadcaster and nursery owner Sarah Hopps will tell us about 'A Garden for All Seasons'. She is another great speaker.

If you want to join our waiting list, or attend as a guest, please contact me for details.

Jean Davies, Chairperson,  
01606 892383 or 0789 993 7683.



### The Avenue:

We hope you all enjoy the new surface on that part of The Avenue between Farthing Lane and School Lane. The other - eastern - end of The Avenue has also been scraped clean of accumulated debris and is vastly improved. The Parish Council will be exploring ways in which the eastern end of The Avenue can be upgraded to match the first stretch.

### Parish Field:

We have taken the decision to keep the Parish Field open. However, we should all be mindful of the amount of water that has fallen in recent months. Please be wary: the land adjacent to the track is soft. It is probably safer to avoid parking on the field whenever possible.

### Westage Lane:

Some six months after the event, Cheshire East Council has published a 'Notice of Temporary Road Closure, Road Traffic Regulation Act 1984', which announced that this order was coming into operation on 20 February 2018 and will continue in force for 18 months - or for such less time as is necessary to complete the work to be executed in the highway, though it is anticipated that the works will be completed by Friday 20th April 2018. Clarification is being sought! On the plus side they have acknowledged work needs to be done (possibly in April this year?), but a window of up to eighteen months would be totally unacceptable. We shall provide an update next month.

### Filming in Great Budworth:

The public meeting held on 20th February was well attended and the film company sought to address all questions and concerns. If you didn't manage to attend, or have any further queries, do get in touch with any Parish Councillor. We shall be communicating regularly with the film crew and will try to sort out any problems that arise.

### Next Meeting

The next full Parish Council meeting will take place on Monday 5th March. All are welcome to attend.

Hilary Brudenell

Chairman, Great Budworth Parish Council



## Need a solicitor? Then go local!

Based in Northwich town centre and established for over 20 years, Susan Howarth & Co. Solicitors, specialise in Family Law (including Family Mediation), Child Care, Residential Property, Wills & Probate (including Care of the Elderly) and Personal Injury.

We're proud to be listed in the Legal 500 Directory and to be Lexcel-accredited in recognition of our high standards of practice management and client care.

We offer 6 FREE legal drop-in clinics every week or a FREE 30 minute consultation.

At Susan Howarth & Co., we're here to help.

**Address:** 41 Chesterway, Northwich, Cheshire, CW9 5JE

**Tel:** 01606 48777 | **Website:** [www.susanhowarthsolicitors.co.uk](http://www.susanhowarthsolicitors.co.uk)



## CHURCH NEWS

### March: Lent and Easter Services

Sun 11<sup>th</sup> at 10.30am: Mothering Sunday, All Age Service.

Sunday 18<sup>th</sup> at 4.00pm: Ecumenical Stations of the Cross (no evening service at Arley Chapel).

Sunday 25<sup>th</sup> at 10.15am: Palm Sunday Procession, with palms, from Great Budworth Parish Hall; at 10.30am Liturgy of the Passion.

Thursday 29<sup>th</sup> (Maundy Thursday) at 7.30pm: Mass of the Last Supper, followed by the Vigil in church till 10.00pm.

Friday 30<sup>th</sup> (Good Friday) at 2.00pm: Meditations on the Cross, followed by Evening Prayer at 3.00pm.

### April

Sunday 1<sup>st</sup> (Easter Day) at 8.00am: Holy Communion; at 10.30am Festival Eucharist for Easter.

**Compline Services during Lent:** every Thursday evening, from 22<sup>nd</sup> February at 7.30pm, in the Lady Chapel.

### Ecumenical Lent Study Group

This will be held on Thursday evenings at 7.30pm, having started on 22<sup>nd</sup> February, at 21 Goosebrook Close, Comberbach. All are welcome. The subject of the five-week course will be 'On the Third Day', by the York Course.

### Confirmation

Bishop Keith Sinclair will be visiting Great Budworth Church on Sunday 29<sup>th</sup> April. If you are interested in being confirmed please contact the Vicar. There will be a number of group sessions on Sunday mornings, after the main morning service, during March and April, prior to the 29<sup>th</sup>.

### Sponsored Sleep-Out

Saturday 10<sup>th</sup> March. This is in aid of homeless people in the North West and the work of Christian Community Ministries in Romania. If you would like to brave the elements, please speak with the Vicar - cardboard boxes are permitted! Sponsorship sheets are available at the back of the church.



## Carole Dorian



**I**t is with great sadness that we report the death of Carole Dorian, of Westage Lane, on the 5<sup>th</sup> February. Carole was a well-known and popular figure, as was evident from the packed Northwich Crematorium on Monday 19<sup>th</sup> February: it was standing room only.

Born in Northwich, Carole was one of six children of a WWII bomber pilot who was awarded the DFC and who, after the war, worked for (the then) ICI. Carole loved country life from childhood and from an early age helped out at a local farm. Throughout her life, which was lived mostly in Aston by Budworth, she enjoyed long country walks – often accompanied by one or more dogs. Carole began her working life at ICI before later becoming a care worker.

Mother to Paul, Julie, Mark and Kathleen, grandmother to Jack and mother-in-law to that Man About The Village, Ted Parry, Carole was a regular in the George & Dragon and the Spinner & Bergamot. The Reverend Alec Brown, who led a beautiful funeral service, said he didn't know where he'd have been "if I'd accepted every 'social half' Carole offered me!"

A lifelong fan of Elvis Presley, her committal was followed by The King singing 'The Wonder of You' – a sentiment shared by all those present.

## GOLDEN CONSTRUCTION

***Give us a call - we'll do it all***

**Builders and property  
maintenance  
Damp treatment  
Handyman service**



**BOB DEAN  
01606 891766  
07814 851 366**

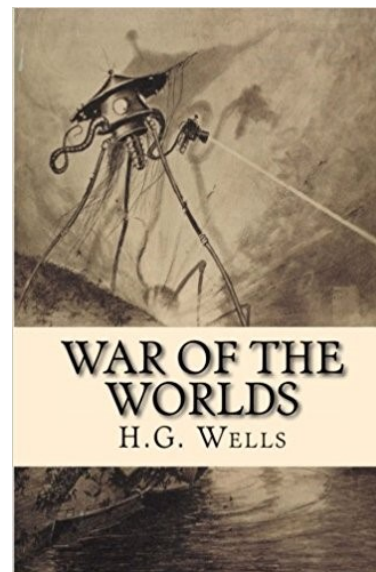


### Maggie's flowers

A full florist service for all occasions on your doorstep.  
Fresh flowers a speciality. Some varieties grown on the farm – cut fresh to order.

Please ring or email –  
maggie@maggiiearl.co.uk  
07970 927 161  
or  
01565 777262

## Coming Soon to Great Budworth: The War of the Worlds!



**M**ammoth Screen, the television production company responsible for such television successes as Poldark and Victoria, met with villagers on Tuesday 20<sup>th</sup> February to explain its plans for its forthcoming production of H. G. Wells's 'War of the Worlds' - plans which involve filming in our village. The following are some of the key points the company made at that meeting.

♦ Great Budworth will be one of the key locations in the show - it will act as a section of Weybridge in the story and will be where the heroes, George and Amy, live. Their house will be Providence Cottage on Church Street.

♦ Filming will take place all over the village, but predominantly on Church Street and the centre of the village.

♦ Mammoth will probably film for around 11 days in total, split into two sections: one pre-

Martian attack, one post-attack.

- ♦ Filming will probably take place during the week commencing 2nd April (though not on Monday 2nd) and the following week. These weeks fall in the school holidays.
- ♦ There will be several days of preparatory work/set dressing done in the village before both visits, particularly temporarily covering modern window frames and doors on specific houses, all of whose owners will be contacted beforehand. (Please note: nothing will be done to your house if you object!)
- ♦ Everyone will be asked to park their cars away from the affected streets during filming. The Parish Field will form a residents' car park and technical support vehicle area: the plan is to protect the field with heavy duty track matting.
- ♦ The road through the village will be closed to traffic on all filming days. This closure will be managed by Hatton Traffic Management and a diversion will be in place. Villagers will always be able to get to their homes, of course.
- ♦ There will be a 24-hour a day security presence in the village during the entire filming period.
- ♦ Mammoth Screen will communicate regularly with all residents and they will do their utmost to advise where and what will be filmed each day.
- ♦ The film company will liaise closely with CW&C and Creative England (who are both fully supportive of these proposals) and with the police and highways departments.

## SCHOOL NEWS

Pupils in Class 4 have recently returned from a residential trip to the Conway Centre on Anglesey, where they took part in an Arts Education in a Multi-cultural Society programme. Each pupil was able to experience a variety of activities, including Indian dancing, African drumming, Visual Arts, Beat boxing and storytelling from the Romany tradition. Here are some of the children's comments;

"It was good. I liked the drumming and the beat boxing."

"I enjoyed the diversity of activities and trying new things."

"It was good to learn about different cultures and their viewpoints."

"It was fun to be with the children from Antrobus St Mark's school and getting to know them better."

"I enjoyed the joyful songs to accompany the dancing."

"I liked the stories with a personal perspective of growing up."

Other highlights within the school this half term have included Class 1 bringing their bikes in to school and a whole week devoted to the theme of Robin Hood, including an Image Theatre performance and archery lessons.

## WI JUMBLE SALE

Please clear out your cupboards and wardrobes for the Jumble Sale on Saturday 24<sup>th</sup> March in the Parish Hall at 11am. We also have a good as new rail for quality clothes. The hall will be open from 9am and customers are admitted at 11am. It will all be over by 1pm.



We will need lots of jumble, bric-a-brac, unwanted gifts and clutter - and lots of help, especially around 11am. Coffee and tea will be available, too.

We dispose sensitively of all jumble that's left: some go to a charity shop, some clothes are sold for use overseas, and bric-a-brac goes to an animal charity, so very little is thrown away.

Every year we vow never to have another jumble sale, but I think the discipline of throwing out what we no longer need and - dare I say it - coming home with something we fancy, or seeing customers buying what we are disposing of, is a good form of recycling. And it makes money too, so we are all winners.

June Wilkinson

## PARISH HALL FACILITIES

The Parish Hall toilets have been up-graded. We have put new floor covering in all three toilets; and the ladies' cubicles, which were very small, have been enlarged. Electric hand driers have been fitted to get rid of the hand towels (they are no longer considered hygienic) and when the decorating is complete they should look very smart. Well done to all the committee who have overseen the project; it looks good.



## Pointless? Certainly Not!

Fans of the popular game show Pointless may have spotted a familiar face among the contestants on 31<sup>st</sup> January, when John Munnery, of Arley, and his son, Tom, appeared as contestants. The programme was actually recorded in October 2016, so it was a long wait before it came to the small screen! John and Tom were appearing alongside three other couples: each episode of the quiz, which is presented by Alexander Armstrong and Richard Osman, features four teams of two contestants attempting to find correct but obscure answers to general knowledge questions in order to score as few points as possible, and become eligible to compete for the show's cash jackpot. En route to the final round, John and Tom managed three Pointless answers,



one of which added £250 to the final jackpot, at which point it stood at £10,500. To win, the pair had to name any Formula 1 racing driver who came in the top three during the 1960s, 1970s or 2000s. Tom came up with Michele Alboreto from the 1980s and John named Jochen Rindt from the 1960s, either of which would have won the jackpot, though in the event it was Tom who answered first and therefore won (for them both!). The photo shows father and son at their moment of victory. Asked what they'd do with the money if they won, Munnery *filis* wryly suggested 'a funeral care plan for my Dad' - Munnery *père* simply said, "At my age? I'm gonna blow it!" Well said, John!

## PADDY PAWS HOMEBOARDING DOG DAY CARE

We look after all your dog's needs. Dogs live in the comfort of our home and are taken for walks in the countryside whilst you're away on holiday or at work.



Call Judy/Anna on 01606 891536  
07719 576128

Hilltop Farm, Aston-by-Budworth, CW9 6NG  
Licensed, fully insured & DBS checked

## NJ Garden Maintenance

Neil Jones, local gardener with an established Great Budworth and surrounding area clientele now available for all types of garden work, from regular grass cutting to hedge maintenance and one-off garden tidy ups. Licensed to remove all your garden waste.

Friendly and reliable service, now taking bookings for this season

Large or small, give us a call.  
01606 350793 or 07977 105380